



DEHESA SCHOOL DISTRICT
Regular Governing
Board Meeting

AGENDA

March 14, 2016

Welcome

Welcome to the meeting of the Dehesa School District Governing Board. Your interest in our school district is appreciated.

Our Governing Board

Our community elects five Board members who serve four-year terms. The Board members are responsible for the overall operation for the school district. Among its duties, the Board adopts and annual budget, approves expenditures, establishes policies and regulations, authorizes employment of all personnel, approves curriculum and textbooks, and appoints the Superintendent.

Cindy White -

Mrs. White was first elected to the governing Board in November 2002, re-elected in 2006, 2010 and 2014. Her current term expires in 2018.

Karl Becker -

Mr. Becker was elected to the board in 2010 and reelected in 2014. His current term expires in 2018.

Christina Becker

Mrs. Becker was first elected to the Governing Board in the year 2014. Her current term expires in 2018.

Jeff Royal -

Mr. Royal was first elected to the governing Board in November 2000. He was re-elected in 2004, 2008 and 2012. His present term expires in 2016

Derek Voth

Mr. Voth was appointed to the Governing Board in January 2013 and his term expires in 2016.

DEHESA SCHOOL DISTRICT

LOCATION & TIME

CLOSED SESSION - 6:30 p.m.

Dehesa School – School Office

LOCATION & TIME -

OPEN SESSION - 7:00 p.m.

Dehesa School - MPR

REGULAR GOVERNING BOARD MEETING

MARCH 14, 2016

AGENDA

Accommodations: In compliance with the American with Disabilities Act 1990, if you need special assistance to participate in this meeting, please contact the office of the Superintendent at 619-444-2161. Notification of 48 hours prior to the meeting will enable the District to make reasonable arrangements to ensure accessibility to that meeting.

In compliance with Government Code section 54957.5, non-exempt writings that are distributed to a majority or all of the board in advance of a meeting, may be viewed at Dehesa School District, 4612 Dehesa Road, El Cajon, CA 92019, or at the scheduled meeting. In addition, if you would like a copy of any record related to an item on the agenda, please contact Sheila Cochran.

Board of Education agendas and minutes are, by law, public documents. Please note the Dehesa School District posts Board agendas and minutes on the school website; www.dehesasd.net.

I. Call to Order

- A. Public Comment on Closed Session Items.

II. Closed Session

- A. PUPIL PERSONNEL MATTERS: The Governing Board will recess to Closed Session to consider pupil personnel matters pursuant to Government Code Section 35146, 72122, and 48918
- B. PERSONNEL MATTERS: The Governing Board will recess to Closed Session to consider personnel matters pursuant to Government Code Section 54957
1. Appointment, Employment, Evaluation of Performance, Discipline, Leaves, or Dismissal of a Public Employee
- C. NEGOTIATIONS: The Governing Board will recess to Closed Session to consider negotiations and related matters pursuant to Government Code 54957.
1. Employee Organizations: DTA, CSEA, and Unrepresented Employees
- D. POTENTIAL LITIGATION: The Governing Board will recess to Closed Session to consider possible litigation pursuant to Government Code 54956.9 (b)(1).
- E. REAL PROPERTY: The Governing Board will recess to Closed Session to consider real property pursuant to Government Code 54956.8 (b)(1). Case No. 37-2015-00030843-CU-WM-CTL

III. Public Meeting

- A. Call to Order and Establishing a Quorum
- B. Closed Session Report of Any Action Taken
- C. Pledge of Allegiance
- D. Agenda Approval

IV. Requests to Address the Board

A. District/Community Organization Reports

1. Parents' Club – Amy Haisch, President
2. Dehesa Teacher's Association – Presidents Kelly Pallitto, Jennifer Griggs
3. California School Employees Association # 663 - Jackie Finch, President
4. Element Education – Terri Novacek, Director
 - a. Dehesa Charter School
 - b. Community Montessori
5. Diego Hills Charter School – Lindsay Reese
6. The Heights Charter School – Diana Whyte
7. Inspire Charter – Nick Nichols
8. Method Schools – Jessica Venezia
9. Mosaica Online Academy of Southern California – Justin Schmitt
10. Citizen Input

B. Board Input

V. Routine Action Items

The following items are considered by the Superintendent to be of a routine nature and are acted on with one motion. Any recommendation may be removed at the request of any Board Member and placed under new and/or unfinished business.

- A. Approval of Minutes – It is recommended that the board of Trustees approve the minutes of the following meetings:
 1. Special Board Meeting – February 6, 2016
 2. Regular Board Meeting – February 11, 2016
- B. Approval of Warrants – It is recommended that the Board of Trustees approve the commercial warrants as presented.
- C. Conferences and Workshops
 1. NGSS Grade Level Academies – Next Generation Science – Mynor Pinillos – May 10, May 11, May 18 - \$75.00
 2. Annual Conference for Kindergarten and First Grade Teacher, March 4th, 5th \$359.00 each plus hotel.
 3. Conference on Labor Negotiations and Personnel Issues: April 20-22. Superintendent and Business Manager to attend. Cost is \$395.00 per person plus hotel of \$510.00.
 4. CSBA Policy Consortium Workshop – April 5,6 in Vallecitos, CA. Superintendent, Business Manager and Administrative Secretary to attend. Cost TBD.
 5. SDCOE Professional Growth for Library Media Educators – April 21, 2016; \$75.00
- D. It is recommended that the Board of Trustees approve the renewal of the District Interdistrict Transfer Agreement for 2016-2021 with La Mesa Spring Valley School District.

VI. Information & Proposals (Action may be taken)

A. Correspondence:

1. Letter from Superintendent re: Program Improvement
2. Letter from County of Superintendent re: Change of Election System
3. Letter from Registrar of Voters re: Polling Location
4. Letter from State Superintendent re: Every Student Succeeds ACT

B. Report, Information, and Presentations

1. Budget Report
2. State School Building Report
3. Site Administrator Report
 - a. Teacher Report/Assessment Data
4. Enrollment

C. Discussion

VII. Action Items

A. Public Hearings – None

B. Old Business – None

C. New Business

1. The Board will consider the Approval of the Second Interim Budget report.
2. The Board will consider the Proposed Amended Board Date Calendar for remainder of the year.
3. The Board will consider the Resolution 2016.3.1

D. Negotiations - None

E. Board Policies

1. None

F. Personnel –

None

VIII. Advance Planning

A. Next Meeting

1. Regular Meeting – Tuesday, April 12, 2016 at 6:30p.m. Closed Session/7:00p.m. Open Session

B. Agenda Items – Trustees may request placing items on the next agenda

C. Future Meeting Dates

1. Regular Meeting – May 10, 2016 at 6:30p.m. Closed Session/7:00p.m. Open Session

IX. Adjournment

DEHESA

SCHOOL DISTRICT

REGULAR GOVERNING BOARD MEETING

February 6, 2016

Minutes

- I. **Call To Order:** President Cindy White called the meeting to order at 9:01 am and the Board convened into Closed session. A quorum was established with Board members being present; Cindy White, Karl Becker, Christina Becker. Jeff Royal and Derek Voth were absent. Also in attendance were Superintendent Nancy Hauer, Principal Tamara Ripke and Business Manager Lori Wigg. Board trustee Karl Becker led all in the Pledge of Allegiance. The Board adjourned into closed session.
- II. **Closed Session**
- III. **Public Meeting:** The Board reconvened at 11:20 and reported no action was taken at closed session. Meeting was adjourned
- IV. **Next Meeting:** February 11, 2016 with closed session at 6:30 and open session at 7:00 pm.

Respectfully submitted by:

Approved by:

Nancy Hauer
Superintendent

Christina Becker
Clerk of the Board

DEHESA

SCHOOL DISTRICT

REGULAR GOVERNING BOARD MEETING

February 11, 2016

Minutes

- I. **Call To Order:** President Cindy White called the meeting to order at 6:30 and the Board convened into Closed session.
- II. **Closed Session**
- III. **Public Meeting:** The Board reconvened at 7:20 pm and President White called the meeting to order and stated no action was taken in closed session. A quorum was established with members being present: Cindy White, Karl Becker and Christina Becker. Jeff Royal and Derek Voth were absent. A student from Inspire Charter led all in the Pledge of Allegiance. Karl Becker made a motion to approve the agenda, seconded by Christina Becker. President White asked that item IV.A.7&8 be moved up to the front of the agenda to accommodate the students waiting to speak. Board approved the agenda with changes noted as follows:
Ayes: Cindy White, Karl Becker, Christina Becker
Nays: None
Absent: Jeff Royal, Derek Voth
Abstain: None
- IV. **A.7 Inspire Charter:** Erika Vanderspek Director of Curriculum at Inspire Charter introduced students who spoke about their positive experience at Inspire Charter. A senior said she likes the ability to work at her own pace with a flexible schedule. She is part of Student Council and the yearbook team; says there are many different ways to help prepare for college. She attends enrichment activities, gets to meet regularly and get help from the teachers. A seventh grader also spoke about how he is always able to meet with teachers and is also partnered with other students. He said the website is easy to work on and has easy access to showing lessons, subjects and daily plan. A fifth grader spoke and says he loves the school, teachers and parental support. He is currently studying and learning about American history and the atmosphere. The Board thanked the students for coming and shared their appreciation of the students letting the Board know how their learning experience was going for them.
A.8 Jessica Spallino from Methods School was present and updated the Board on their upcoming PE and spring testing. They are gearing up for their Summer School program, and they currently have approximately 200 students enrolled. Students who attend other places are able to enroll for their summer program to get more credits they need and then go back to their other school.

A.1 Parents Club: Superintendent Hauer share that they are planning a movie night for February 19th. They are considering changing the date of their monthly meeting to try to improve attendance.

A.2. Dehesa Teachers Association – No update

A.3. CSEA – no update

A. 4 Element Education – Dehesa Charter is at 1,049 enrollment and Community Montessori at 481.

A.5 Diego Hills - They have an open house scheduled for the opening of their Lemon Grove location and have 64 students enrolled there. They took their seniors Ice Skating at the Joan Kroc center and many of them had never been before.

A.9 Mosaica Charter – no update

A.10 Citizen Input – None

B. Board Input: Board members asked about move in date and ribbon cutting ceremony. President White wants to make sure the community is invited to attend. Discussion and decision to have the Grand Opening on Saturday April 9th, even if new furniture has not arrived. Invitations will be sent out and newspapers notified. The other item discussed was the possibility of moving the Board meeting dates to the second Tuesday of the month instead of Thursday to accommodate a board member who is no longer available on Thursday. A few exceptions will need to be made due to Budget items. A tentative new list of dates will be send out to the Board members.

V. Routine Action Items: Karl Becker made a motion to approve the routine action items, seconded by Christina Becker. Discussion by Board members regarding some of the warrant items and answered by Business Manager, Lori Wigg. Vote as follows:

Ayes: Cindy White, Karl Becker, Christina Becker

Nays: None

Absent: Jeff Royal, Derek Voth

Abstain: None

VI. A. Correspondence: Business Manager and Superintendent reviewed the correspondence.

B.1 Budget Report: Business Manager reviewed the budget report and said the interim report was coming up in March so she would have more at that time. Discussion regarding the building fund and expenditures from same. Suggestion by Board to do deferred maintenance report as soon as possible with some items such as shade for lunch area, painting and landscape to be addressed.

B.2 State School Site Building Report: Superintendent Hauer shared that she had completed the second walk through with the punch list items and almost everything has been completed.

B.3 Site Administrator Report: Principal Ripke shared that Enrichment classes start next week and we have 60 signed up and had to recruit another teacher to accommodate the response. There will be three five week sessions with the first session to include a coding class, performing arts, visual arts and cooking class. Art Docent - spent a lot of time during the summer planning it all out, the head person dropped out so some teachers are doing it on their own. Two portables will be given to the Charters and other three we can use, possibly for indoor fitness, reading or science. Mrs. Ripke has been busy with teacher observations, all except one teacher are due before March 1st. MAP testing results are in; they are analyzing them and setting up goals. Title VII meetings will be coming up. Vocabulary - getting ready for testing and introducing students to some words they will need to know. We just had 100 day of school and the K and 1st grade teachers did cool activities. Steele Canyon was here today and information went home. Dehesa is supporting Together We Rise, a foster care group (NEU's charity focus this year). We received a large donation of stuffed animals that we plan to give. In addition, we are also looking at filling blue bags (supplied by Together We Rise) to donate to foster kids in need. Ms. Kelley and Mrs. Ripke are organizing this. The need for shade over the lunch table is a huge concern since the other structure had to be taken down. Discussion and decision by Board to make this a priority and get a quote and options on what can be done.

B.4 Enrollment – Lost two students this week due to a family moving out of town; brings our enrollment to 196.

B.5 Statement of Economic Interest - Secretary gave all Board members their forms and received information on what needed to be included. Signed form will be given back to Secretary who will file appropriately.

C. Discussion - None

VII. Action Items

A. Public Hearings: None

B. Old Business: None

C. New Business

- 1. Audit Report 2014/15:** Karl Becker made a motion to consider the yearly audit report and it was seconded by Christina Becker. Comment from Business Manager Lori Wigg that overall it was a very good report, only two minor findings, both will be corrected for next year. Vote as follows:
Ayes: Cynthia White, Karl Becker, Christina Becker
Nays: None
Absent: Jeff Royal, Derek Voth
Abstain: None
- 2. Bond Audit Report:** Karl Becker made a motion to consider the Bond Audit report, seconded by Christina Becker. Vote as follows:
Ayes: Cynthia White, Karl Becker, Christina Becker
Nays: None
Absent: Jeff Royal, Derek Voth
Abstain: None
- 3. Energy Conservation Resolution:** Karl Becker made a motion to consider the resolution and it was seconded by Christina Becker. Vote as follows:
Ayes: Cynthia White, Karl Becker, Christina Becker
Nays: None
Absent: Jeff Royal, Derek Voth
Abstain: None
- 4. Delegate Assembly Election:** Karl Becker made a motion to consider the Delegates up for election, seconded by Christina Becker. Discussion by Board members on how they wished to vote. Secretary will mail in ballot according to their wishes. Vote as follows:
Ayes: Cynthia White, Karl Becker, Christina Becker
Nays: None
Absent: Jeff Royal, Derek Voth
Abstain: None
- 5. CARS Winter Release:** Karl Becker made a motion to consider the CARS, seconded by Christina Becker. Discussion and vote as follows:
Ayes: Cynthia White, Karl Becker, Christina Becker
Nays: None
Absent: Jeff Royal, Derek Voth
Abstain: None

6. **CSBA Consortium Agreement:** Christina Becker made a motion to consider the agreement and seconded by Karl Becker. Vote as follows:
Ayes: Cynthia White, Karl Becker, Christina Becker
Nays: None
Absent: Jeff Royal, Derek Voth
Abstain: None

 7. **Educator Effectiveness Plan:** Karl Becker made a motion to consider the plan, seconded by Christina Becker. Vote as follows:
Ayes: Cynthia White, Karl Becker, Christina Becker
Nays: None
Absent: Jeff Royal, Derek Voth
Abstain: None
- D. Negotiations: None**
- E. Board Policies:**
1. **Board Policy and Administration Regulation 5111.1:** Karl Becker made a motion to consider the policy and regulation for Children Residing On Federal Lands, seconded by Christina Becker. Discussion on the specific months given to meet and direction by Board to add wording "typically" before the months and vote as follows with the changes:
Ayes: Cynthia White, Karl Becker, Christina Becker
Nays: None
Absent: Jeff Royal, Derek Voth
Abstain: None
- F. 1-3. Personnel:** Karl Becker made a motion to consider the Personnel Recommendations, seconded by Christina Becker. Discussion and vote as follows:
Ayes: Cynthia White, Christina Becker, Karl Becker
Nays: None
Absent: Jeff Royal, Derek Voth
Abstain: None

*Dehesa School District
Governing Board Meeting
February 11, 2016*

VIII. Advanced Planning:

- A. Next regular Board meeting is set for Monday, March 14, 2016. Closed session will be at 6:30p.m. with open session at 7:00 pm.
- B. Agenda Items – per request of Board members.
- C. Future Meeting Dates: To be determined at the March meeting date.

IX. Adjournment: Meeting was adjourned at 8:40 pm.

Respectfully submitted by:

Approved by:

Sheila Cochran
Administrative Secretary

Christina Becker
Clerk of the Board

Dehesa School District
COMMERCIAL WARRANT LISTINGS

February 2016

General Fund Restricted Accounts

<u>Special Education</u>	Date	Amount	
Audiometrics			
ABA education Foundation (Bridges)	2/8/16	\$300.00	Student Supervision Services
Center for Education & Employment Law			
Hatch			
Lemon Grove			
LRP Publications			
Nancy Hauer			
Pearson			
Purposeful Play, Inc.			
Pro-Ed	2/2/16	\$264.00	Assessment Supplies Test booklets
San Diego County Speech Pathology			
Southwest School & Office Supply			
Vista Hill	2/22/16	\$1,567.00	Mental Health Services/Assessments
WPS Publish			

General Fund Other Restricted/Unrestricted Accounts

Transportation

A-Z Bus Sales	2/1/16	\$51.71	Bus Parts
Cajon Valley Union School District			
Creative Bus Sales			
Decker Equipment			
Jaybright Co.			
Tire Centers			
ThemCBurnieDesignCo			
Minda Lawrence			
Yale-Chase			

General Fund Other

A-1 Live Scan	2/8/16	\$57.00	Live Scan & Background Check Heidi/Michelle Kathleen
Aardvark Pest Control, Inc.	2/8/2016	\$586.00	Pest Services Feb Gophers & Ants
ACCO Brands USA			
ACP Direct	2/8/16	\$1,803.42	Charging Cart
A-Discount Vacuum			
ASSOC.			
ASCD	2/4/16	\$59.00	Basic Membership Dues
Alice Training Institute LLC			
Alliance			
Alltech	2/23/16	\$238.14	Repairs
Amazon			
Anita Fire Hose Company			
Apple, Inc.			
APS Laminating Supplies			
Assn of CA School Administrators			

Dehesa School District
COMMERCIAL WARRANT LISTINGS

February 2016

Assn for Supervision & Curriculum Development			
AT&T	2/16/2016	\$162.61	Phone Bill Jan-Feb
Atkinson, Andelson, Loya, Ruud & Romo	2/26/16	\$395.00	Conference Reg Fee Wigg
	2/26/16	\$395.00	Conference Reg Fee Hauer
Avaya			
Award Emblem Mfg Co			
Barnes & Noble			
Becker, Christina			
Bio Corporation			
Boost Prom			
Blackboard Connect			
Brown Industries			
California State Board of Equalization			
California School Boards Association			
California Schools VEBA			
California Dept. of Justice			
Careertrac			
Cintas Corporation			
College Preparatory Mathematics			
Copy Link			
County Proflame			
County of San Diego			
Cottonwood			
CPM			
Dominick Averka	2/9/16	\$878.79	Reimbursement Work Laptop
David Best			
Data Management			
Decker Equipment			
Dehart Backflow			
Dell Awards			
Dell Marketing LLP			
Demco			
Dunn Edwards Paints			
East County Californian			
Emergency Medical Products, Inc			
Educational Data Systems			
Eric Schneider			
ESGI			
Extended School Services	2/19/16	\$53.17	Homeless Student After School Care 1/11-1/22
	2/29/16	\$100.00	Homeless Student After School Care 1/25-2/5
Everything Medical			
Federal Publishing Limited			
FedEx	2/9/16	\$13.36	Express Mailing
	2/22/16	\$25.36	Express Mailing
	2/23/16	\$13.33	Express Mailing
Firewatch	2/9/16	\$123.55	Semi Annual Service and Inspection
Flaghouse, Inc.	2/2/16	\$738.85	Instructional/PE Supplies
Flinn Scientific			
Follett			
Foundation For Education	2/1/16	\$545.00	Superintendents Symposium Registration
Grainger	2/9/16	\$33.66	Maintenance Supplies

Dehesa School District
COMMERCIAL WARRANT LISTINGS

February 2016

Gopher Sport			
Guided Discoveries, Inc			
Heather Alex			
Heidi A.			
Heart Rate Monitors USA			
Hewlett-Packard Co.		\$77.82	Custodial/Maintenance Supplies Dec
Home Depot			
Houghton-Mifflin Harcourt			
HR Direct			
Industrial Chem Labs			
Jackie Finch	2/9/16	\$136.10	Reimbursement workshop/supplies
	2/22/16	\$161.99	Reimbursement Office Chair
J&C Books			
Jholei Evans			
Jolene Guzman			
Jones School Supply Co.			
Jostens			
Julie Wiley			
Jurman's			
Kathleen Daniels	2/29/16	\$60.06	Reimbursement-Instructional Supplies
Kelly Pallito			
K/P Educational Service Prod.			
Lakeshore			
Lauren Kjono			
Learning Upgrade			
Lemon Grove			
Lynn's Locksmith Service			
Mason's			
McGraw Hill			
Meagan Davis	2/11/16	\$398.90	Reimbursement Glasses
Message Logix, Inc.			
MobyMax			
MRC Smart Technologies	2/9/16	\$498.80	Qtrly Maintenance Printers Jan
Mynor Pinillos			
Nicole Suetos	2/8/16	\$26.95	Reimbursement -Instructional Supplies
Nancy Hauer	2/17/16	\$1,042.02	Reimbursement-Conference Expenses Hotel
	2/17/16	\$299.72	Reimbursement-Conference Expenses Rental car
Nexus			
Newegg, Inc			
NvLS			
NWEA			
Office Depot	2/1/16	\$118.07	Instructional and Office Supplies
On Que Tec	2/8/16	\$399.00	Cobra Subscription
Otay Water District	2/22/16	\$376.70	Monthly Service Feb
Oriental Trading Company, Inc			
P&R Paper			
PAC Heating & Air	2/9/16	\$260.50	AC Repairs
	2/23/16	\$100.00	
Pacific Refrigeration	2/19/16	\$192.00	Refrigerator Repairs
Palo Sports			
PC Mall Gov			

Dehesa School District
COMMERCIAL WARRANT LISTINGS

February 2016

Pearson			
Petty Cash			
Positive Promotions			
Precision	2/22/16	\$489.00	Electrical Repair
Read Naturally, Inc.			
Really Good Stuff			
Renaissance Learning			
Revolving Fund	2/1/16	\$3,766.95	Reimbursement Sept-Dec
	2/3/16	\$49.00	Reimbursement
RL Bates, DBA AI-Max			
Roy Wheeler Auto Services			
Roadone	2/23/16	\$240.00	Towing Services
San Diego County Office of Education			
San Diego County Office of Education			
San Diego FBC			
San Diego County Vector			
San Diego County School Boards Asso.			
San Joaquin County Office of Education			
Scholastic Book Club			
Scholastic School Supplies			
School Services of Ca.	2/2/16	\$195.00	Conference Registration Fees
Stoneware Inc.			
School Outfitters			
School Specialty			
Science Olympiad			
SDG & E	2/9/16	4,568.96	Monthly Service- January
Sheila Cochran			
Sheila Cochran			
Skillpath Seminars			
Small School District Association			
SoftChoice			
Southern California Assoc Science Proff.			
Southwest School & Office Supply	2/2/16	\$64.35	Instructional Supplies
	2/19/16	\$30.49	Instructional Supplies
Standard Stationary Supply			
State Water Resource Control Board			
Stutz, Artiano, Shinoff, Holtz			
Sycuan Resort			
Tamara Ripke	2/16/16	\$127.44	Reimbursement Instructional Supplies
Terminix			
Time & Alarm Systems			
Time for Kids			
Tidmore Flags			
Tire Center	2/19/16	\$406.48	
Waste Management	2/2/16	\$214.46	Monthly Service January
Waxie	2/22/16	\$2,156.23	Custodial Supplies
	2/29/16	\$982.12	Custodial Supplies
Wilkinson Hadley King & Co. LLP	2/11/16	\$200.00	Audit Progress Billings
Witt Company			
Xerox	2/1/2016	\$760.08	Copier Monthly Invoice
	2/16/2016	\$1,122.38	Copier Monthly Invoice

Dehesa School District
COMMERCIAL WARRANT LISTINGS

February 2016

Charter School Funding

Community Montessori	2/1/2016	\$13,621.64	In-Lieu taxes (net of oversight)
Community Montessori	2/11/16	\$9,512.69	Special Education Reimbursement
Community Montessori	2/2/16	\$46,391.42	SPED Q2
Dehesa Charter School	2/1/2016	\$14,179.81	In-Lieu Taxes (net of oversight)
Dehesa Charter School	2/11/2016	\$27,923.72	Special Education Reimbursement
Dehesa Charter School	2/2/16	\$136,179.39	SPED Q2
Diego Hills Charter School			
The Heights Charter School			
The Heights Charter School	2/2/16	\$21,001.41	Special Education Reimbursement Q2
Methods Charter School			
Mosaica Charter School			
Girard & Edwards	2/11/16	\$1,895.04	Legal Fees Jan

ESS - Student Care Fund

AT & T
 Petty Cash
 Revolving Fund
 Southwest School & Office Supply
 Stringfield, Ry
 Sysco

Cafeteria Fund

Alpine Union School District	2/19/16	\$3,524.08	Contract School Lunches January
Autumne Sherman			
Ecolab Equipment Care			
County of San Diego			
Francos Pizza			
Hollandia Dairy	2/22/16	\$475.18	Cafeteria Milk
Little Caesars Pizza			
San Jose State University			
PUSD			
SDG&E			
Sysco			

Dehesa School District
COMMERCIAL WARRANT LISTINGS

February 2016

Deferred Maintenance Fund

Awning Products Unlimited
DFS Flooring
GEM Industrial Inc.
Janus Corporation
PAC Heating and Air Conditioning
Pacifica Glass Co
San Diego Door
South Bay Fence Co
Western Environmental & Safety Tech

NGSS Grade Level Academies (Middle & High School)

(3 Day Event) May 10, 2016 - May 18, 2016

Event Dates: May 10, 2016 | May 11, 2016 | May 18, 2016

For
Mynor Pinillos

The Next Generation Science Standards have been adopted, requiring shifts in how teachers teach and how students learn science. This three-day grade level academy provides secondary teachers an opportunity to come together and look in depth at the conceptual shifts and three-dimensions of the NGSS as they consider the instructional changes that will need to happen in their classroom to support these new standards.

Teachers will:

- deepen understanding of the three dimensions of NGSS
- explore the research around the standards
- work in grade alike/course alike teams to develop conceptual storylines
- develop learning performances
- begin to plan coherent three-dimensional instructional units

Event Details

Title NGSS Grade Level Academies (Middle & High School)

Date(s) (3 Day Event) May 10, 2016 - May 18, 2016

Event Dates: May 10, 2016 | May 11, 2016 | May 18, 2016

Time 8:00 am - 3:00 pm

Registration will begin at 7:30am

Facilitator(s) John Spiegel, Science Coordinator

Price \$ 75.00 per individual

Mail payment payable to: Superintendent of Schools
San Diego County Office of Education
John Spiegel, 321S
6401 Linda Vista Road
San Diego, CA 92111

If paying by School PO, Fax or Email copy of PO to katharine.bowman@sdcoe.net
FAX: (858) 505-9420

Cancellation/Refund Deadline: 05/08/16 Cancellations must be received in writing to Kathy Bowman at katharine.bowman@sdcoe.net. You can transfer a registration without penalty. Cancellations submitted after deadline or no shows will be charged full amount of registration fee.

Location Point Loma Nazarene- Mission Valley
4007 Camino del Rio South
San Diego, CA 92108

[Map](#) | [Driving Directions](#)

Maps and directions provided by Google® Maps. Please verify map and driving directions for accuracy prior to attending event.

Contact Kathy Bowman
katharine.bowman@sdcoe.net

[Scheduled Events](#) [Event Directory](#) [Help](#)

Search Calendar

Would you like to:

- 1. **Register Another Person for this event?**
 - o [Register another person from the same County/District/School](#)
 - o [Register another person from a different County/District/School](#)
 - 2. **[Return to the Calendar of Scheduled Events](#)**
- [None of the above](#)**

Instructions

Thank you for submitting your registration. Please print a copy of this page for your records. You should receive an email notification of the receipt of your registration request within 24 hours.

The current status of your registration for this event is **PENDING**. In order to **CONFIRM** your spot for this event, you must submit payment in one of the approved payment methods. Instructions will be provided in the confirmation e-mail.

If the event is full you will receive an email notifying you that you have been placed on a Waiting List for the event.

If you do not receive any of the notifications within the specified time frame, please check your junk/spam folder in your email package or telephone the event contact person.

Event Details

Registration Details

Event NGSS Grade Level Academies (Middle & High School)

Date(s) (3 Day Event) Apr 19, 2016 - May 17, 2016
Event Dates: Apr 19, 2016 | Apr 20, 2016 | May 17, 2016

Time 8:00 am - 3:00 pm

Facilitator(s) John Spiegel, Science Coordinator

Location San Diego County Office of Education

Contact Kathy Bowman
katharine.bowman@sdcoe.net
P: (858) 292-3789

Status WAITING LIST

Confirmation Number pin-9n9iir

Name Mynor Pinillos

Educational Organization Dehesa Elementary School

Work Address 4612 Dehesa Road
El Cajon, CA 92019-2922

Email mynor.pinillos@dehesasd.net

Phone (619) 444-2161

Payment Details

Participant Comments/Questions/Special Requests

Event NGSS Grade Level Academies (Middle & High School) \$ 75.00

Total Cost \$ 75.00

I'm a Middle School teacher at our K-8 school

Preferred Payment Method Purchase Order

Comments PO #6747

Payment Instructions Mail payment payable to: Superintendent of Schools
San Diego County Office of Education
John Spiegel, 321S
6401 Linda Vista Road
San Diego, CA 92111

If paying by School PO, Fax or Email copy of PO
to katharine.bowman@sdcoe.net
FAX: (858) 505-9420

Cancellation/Refund Deadline: 04/15/16
Cancellations must be received in writing to Kathy
Bowman at katharine.bowman@sdcoe.net. You
can transfer a registration without penalty.
Cancellations submitted after deadline or no shows
will be charged full amount of registration fee.

Payment Options Cash, Check, Money Order, Purchase Order

 [Add to Calendar](#) | [Help](#)



Organization Management System (OMS)

Event Registration Management Software Designed by and for K12 Education

OMS v5.1 © 2003-2016 - All Rights Reserved

Use of this site signifies your agreement to our [Terms of Use](#).

[Web Site Requirements](#)



Annual Conference For Pre-K, TK, Kindergarten and First Grade Teachers

Hosted By
The Southern California Kindergarten Conference Inc

March 4th and 5th, 2016

Pasadena Convention Center

Presenters

- Heidi Butkus
- Shari Sloane
- Shannon Samulski
- John Funk
- Katie Knight
- Kelley Dolling
- Whitcomb Hayslip
- Hap Palmer
- And Many More!

Plus...

Register to attend the Pre-Conference with tracks and breakout sessions that are especially tailored to meet the needs of your grade level.

Attend the Bloggers' Bash! Come meet your favorite bloggers and enjoy an evening of food, prizes and fun!

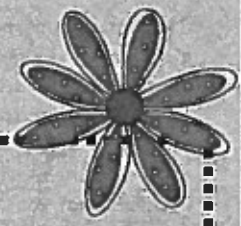
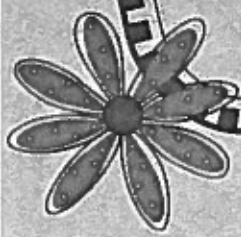
Come stay with us at one of our contracted hotels. Make your reservations with the hotel directly and mention SECC to get the conference rate. (See Page 6 for more information.)



Sheraton Pasadena Hotel
303 East Cordova Street, Pasadena CA 91101
(626)449-4000



Hilton Pasadena
168 South Los Robles, Pasadena CA 91101
(626)557-1000
577 -



Join us for an intensive pre-conference learning experience presented by grade level experts!

The 2016 Pre-Conference offers a deep dive into topics tailored to each individual grade level.

Pre-conference breakout sessions are organized along three tracks; a track for Transitional Kindergarten Teachers, a track for Kindergarten Teachers, and a track for First Grade Teachers. You don't need to stick to one track. Feel free to mix and match your sessions to customize your learning experience! (Register on page 5).

Specially for...

TK

Kindergarten

First Grade

Heidi Butkus

AM Session P01 / PM Session P07

Musical, Active, and Child-Friendly Ways to Teach the Alphabet and Do Guided Reading with Pre-Readers

Lead your TK students into the world of literacy through music, movement, games, and other fun, developmentally appropriate activities that really work! Do guided reading with emergent readers and even your non-readers! Plus, easily introduce important Common Core literacy skills. Some of your students may even "crack the reading code" while they are at it! Plus, learn lots of other great, guided reading strategies that really work, to help get beginning readers moving toward becoming real readers (painlessly!)

Shari Sloane

AM Session P03 / PM Session P09

Wild about Writing!

De-stress the process of writing with your kindergarten students using modeled, shared, interactive, guided, and independent writing activities! Shari will also break down the Common Core State Standards for writing in kindergarten, and identify the easiest ways to master them and start using them with your own students. Shari presents many simple strategies she's tried and perfected in her own classroom. They work!

Katie Knight

AM Session P05 / PM Session P11

Getting from CVC to Comprehension Paragraph Writing!

The demands of the Common Core on 1st graders are high! Get tricks that help your first graders from CVC into reading writing longer and meaningful text. Find how to fit it all in and have fun doing it! fluency passages and reading games. I springboard off of fluency into quality. All three text types will be discussed as maps to help kids process their thinking and get their big ideas onto paper. You leave ready to lead your ELL's, your struggling learners, and your high achievers toward success and second grade reading.

Whitcomb Hayslip

AM Session P02 / PM Session P08

Matching Instruction in TK to the Developmental Needs of 4 and 5 Year Olds

The state guidelines for Transitional Kindergarten (TK) require implementation of a "developmentally appropriate" curriculum. Let's take a deeper look at the developmental needs of young children and explore instructional strategies that match their development. Share ideas for intentional planning of an effective program. Leave with a deeper understanding of "developmentally appropriate" curriculum, its direct relationship to long-term school success, and concrete strategies for implementation in your classroom.

Shannon Samulski

AM Session P04 / PM Session P10

Numeracy Centers and Games- Wonderful Ways to Differentiate!

Infuse your numeracy instruction with hands-on games incorporating strategies, facts, and standards. Find out how to set up and manage developmentally appropriate math centers that can be easily differentiated for your kindergarteners and reinforce concepts in numeracy. From activity cards to simple manipulatives, you'll make-and-take practical, use 'em tomorrow activities that develop the numeracy skills so crucial to ongoing math success!

Kelley Dolling

AM Session P06 / PM Session P12

Not So "Common" Core Math!

Are you ready for a fast-paced workshop filled with oodles of "out of the box" games and ideas that will hook your first graders learning and loving common core math comparing numbers and working on word problems to missing addends and interpreting data, this jam-packed session covers it! Organized into specific strands and broken down by standard, you will easily fill your teaching arsenal with dozens of meaningful activities that will help you seamlessly supplement your current curriculum with putting smiles on kids' faces. Get ready for giveaways, handouts, and fun!

Atkinson, Andelson, Loya, Ruud & Romo

2016 Shell Beach Conference

*An Advanced Labor Negotiations and Personnel Institute
For Education Leaders and Board Members*

April 20-22, 2016

*The Cliffs Resort
at Shell Beach*

2757 Shell Beach Road
Pismo Beach, CA 93449



REGISTRATION FEES:

\$395 per person (Early Bird). After March 11, 2016, \$425 per person for full conference registration and \$225 for one-day conference registration.

Registration fee includes:
two breakfasts, one lunch,
one dinner (F. McLintocks)

aa/rr

Six Hours of MCLE and HRCI CREDIT

aa/rr

Atkinson, Andelson
Loya, Ruud & Romo

A Professional Law Corporation

12800 Center Court Drive, Suite 300
Cerritos, California 90703

**2016
Shell Beach
Conference**



April 20-22, 2016
The Cliffs Resort at
Shell Beach

Registration Information

REGISTER BY MAIL:	If you are paying by check, mail this form with your check made payable to: Atkinson, Andelson, Loya, Ruud & Romo, Attn: Events 12800 Center Court Drive, Suite 300, Cerritos, CA 90703
REGISTER BY FAX:	Fax a completed copy of this form to (562) 653-3333 and mail your check with a copy of the form to the address listed above.
REGISTER ONLINE:	Visit www.aalrr.com to complete the registration form online. When paying the registration fee by credit card, follow the link to <i>PayPal</i> or call (562) 653-3579 for assistance.
QUESTIONS:	For more information/immediate registration, contact Keesha Clark at (562) 653-3579.

Name	Lori Wigg	Position	Business Manager
District	DEHESA	Fees Paid	\$
Mailing Address	4612 Dehesa Rd		
City	El Cajon	State	CA
		Zip Code	92019
Telephone	619 444 2161	E-mail (Required)	lori.wigg@dehesaasd.net
<p>Cancellations must be received in writing on or before April 1, 2016 to receive a refund. No refunds will be given after that date. Attendee substitutions may be made at any time. We are not responsible for hotel accommodation cancellations.</p>			

Hotel Information:

Rooms must be reserved and paid for directly with the Cliffs Resort. We have obtained a block of rooms at a rate of \$179 per night plus tax and there is a \$20 facilities fee per room per night.

Mention AALRR when booking your room.

Cliff's Resort (805) 773-5000 or <http://www.cliffsresort.com/>.

aalrr Atkinson, Andelson
Loya, Ruud & Romo
A Professional Law Corporation

Registration Information

REGISTER BY MAIL:	If you are paying by check, mail this form with your check made payable to: Atkinson, Andelson, Loya, Ruud & Romo, Attn: Events 12800 Center Court Drive, Suite 300, Cerritos, CA 90703
REGISTER BY FAX:	Fax a completed copy of this form to (562) 653-3333 and mail your check with a copy of the form to the address listed above.
REGISTER ONLINE:	Visit www.aalrr.com to complete the registration form online. When paying the registration fee by credit card, follow the link to <i>PayPal</i> or call (562) 653-3579 for assistance.
QUESTIONS:	For more information/immediate registration, contact Keesha Clark at (562) 653-3579.

Name <i>Nancy Hauer</i>		Position <i>Superintendent</i>	
District <i>DEHESA</i>		Fees Paid \$	
Mailing Address <i>4612 Dehesa Rd</i>			
City <i>El Cerrin</i>		State <i>CA</i>	Zip Code <i>92109</i>
Telephone <i>619 444 2161</i>		E-mail (Required) <i>nancy.hauer@dehesasd.net</i>	
<p>Cancellations must be received in writing on or before April 1, 2016 to receive a refund. No refunds will be given after that date. Attendee substitutions may be made at any time. We are not responsible for hotel accommodation cancellations.</p>			

Hotel Information:

Rooms must be reserved and paid for directly with the Cliffs Resort. We have obtained a block of rooms at a rate of \$179 per night plus tax and there is a \$20 facilities fee per room per night.

Mention AALRR when booking your room.

Cliff's Resort (805) 773-5000 or <http://www.cliffsresort.com/>.

[Manage OMS Account](#)

Library Media Services Event Calendar

[Scheduled Events](#) [Event Directory](#) [Help](#)

Search Calendar

Go

Professional Growth Day for K-12 Library Media Educators

Apr 21, 2016

Can school libraries play a role in the achievement gap? Equity and Access is the theme of our Spring Professional Growth Day. Pam Munoz Ryan, award-winning author, and Deborah Taylor, noted librarian will deliver keynote addresses that explore this theme.

Event Details

Title Professional Growth Day for K-12 Library Media Educators**Date(s)** Apr 21, 2016**Time** 8:30 am - 3:00 pm**Audience** K-12 library media staff**Facilitator(s)** Jonathan Hunt**Price** \$ 75.00 per individual

Location San Diego County Office of Education
6401 Linda Vista Road
San Diego, CA 92111-7319
[Map](#) | [Driving Directions](#)
Maps and Directions

Contact Jonathan Hunt
jonathan.hunt@sdcoe.net
P: (619) 718-4970

Sponsor Library Media Services

Register

[Click Here to Register](#)

Registration Deadline: Apr 15, 2016

OMS Account Holders

[Login Here to Register for Event](#)

[Don't have an OMS account?](#)
[Click here to create one.](#)

Share

[Add to Calendar](#) | [Help](#)**Organization Management System (OMS)**

Event Registration Management Software Designed by and for K12 Education

OMS v5.1 © 2003-2016 - All Rights Reserved

Use of this site signifies your agreement to our [Terms of Use](#).[Web Site Requirements](#)

Back By Popular Demand....

AALRR is pleased to announce the return of our popular "Shell Beach Conference," to be held April 20-22, 2016 at its traditional location at the Cliffs Resort at Shell Beach in San Luis Obispo County.

This annual spring conference focusing on labor negotiations and personnel issues for schools and community colleges has traditionally provided a welcome break allowing both education leaders and board members to focus on strategies to resolve pending labor disputes and to prepare for future negotiations. Need-to-know information on hot topics in personnel is also presented.

The conference has plenty of opportunities to network and share information with colleagues and other elected officials from throughout the State and to interact with AALRR attorneys you may work with from both Northern and Southern California.

Who Should Attend

This two-day conference is designed to appeal to leaders of school and community college districts and county offices of education. Superintendents, Assistant Superintendents, Governing Board members and any other administrative employees involved in labor negotiations or personnel will find this conference to be an invaluable experience.

The Cliffs at Shell Beach



The Cliffs Resort is on the ocean, near the community of Shell Beach, on California's Central Coast. It is within driving distance of both Northern and Southern California and is in the center of a magnificent recreation area with golfing, beachcombing, and fine dining available minutes from the conference hotel. Pismo Beach, San Luis Obispo, Avila Beach, Hearst Castle, and Morro Bay are all nearby.

Conference," to be held April 20-22, 2016 at its traditional location at the Cliffs Resort at Shell Beach in San Luis Obispo County.

This annual spring conference focusing on labor negotiations and personnel issues for schools and community colleges has traditionally provided a welcome break allowing both education leaders and board members to focus on strategies to resolve pending labor disputes and to prepare for future negotiations. Need-to-know information on hot topics in personnel is also presented.

Dates

April 20 - 22, 2016

Location

The Cliffs Resort at Shell Beach
2757 Shell Beach Road
Shell Beach, CA

Registration Fees

\$395 per person (Early Bird) until March 11th

\$425 March 12th until Conference (All Day)

\$225 for one-day registration

*Fee includes two breakfasts, one lunch,
one dinner at (F. McLintocks)
and comprehensive materials.

Agenda

Wednesday, April 20th

5:30 - 6:30pm - Session A

Brown Act Boot Camp for Board Members and Administrators

5:30 - 6:30pm - Session B

Women in Leadership: Reaching and Breaking the Glass Ceiling & Reception

6:30 - 7:30pm

Hospitality Reception

~

Thursday, April 21st

8:00 - 9:00am

Registration/Breakfast

9:00 - 10:30am - General Session

Framing the FRISK Message

10:30 - 10:45am

Break

10:45 - 12:15pm - Session 1

Negotiating Employee Compensation Using Supplemental and Concentration
Grant Dollars

10:45 - 12:15pm - Session 2

Art of Testifying

12:15pm - 1:15pm

Lunch

1:30 - 2:45pm - Session 3

The Role of the Board in Labor Negotiations

1:30 - 2:45pm - Session 4

Controlling Employee Leaves Through Contract Language

3:00 - 4:15pm - Session 5

Demystifying Impasse and Fact-Finding

3:00 - 4:15pm - Session 6

Ensuring Safe Schools Environments in Compliance with Title IX

6:00pm

Dinner @ F. McLintock's

~

Friday, April 22nd

9:00 - 9:30am

Continental Breakfast/Networking

9:30 - 11:00am - General Session

High Pressure Tactics on the Road to Labor Settlements

(Special Guest Speaker)

11:00 - 11:30am


Traditional Prize Raffle

12:00pm

Hotel Checkout

[Download Brochure](#)

Register for Shell Beach

2016	SHELL BEACH REGISTRATION AGENDA: Choose the sessions you are interested in attending. Mark the boxes with your choice. This will help us with room arrangements.	
	Wednesday, April 20, 2016 4:00-5:00 p.m.	Pre-Conference Registration
	Pre-Conference Breakout Session A 5:30-6:30 p.m.	Brown Act Boot Camp for Board Members and Administrators
	Pre-Conference Breakout Session B 5:30-6:30 p.m.	Women in Leadership: Reaching and Breaking the Glass Ceiling & Reception
	Hospitality Reception 6:30-7:30 p.m.	Join us to "kick off" this year's Shell Beach Conference at our Welcome Networking Hospitality Reception to engage in lively discussion and meet our AALRR attorneys and special guests.
	Thursday, April 21, 2016 8:00-9:00 a.m.	Registration/Breakfast
	9:00-10:30 a.m.	General Session: Framing the FRISK® Message - An introduction to how to influence employee cooperation for change.
	Break 10:30-10:45 a.m.	
	Morning Breakout Session 1 10:45-12:15 p.m.	Negotiating Employee Compensation Using Supplemental and Concentration Grant Dollars
	Morning Breakout Session 2 10:45-12:15 p.m.	Art of Testifying – Coaching tips for when your testimony is the key to winning the case.
	Lunch 12:15 p.m.-1:15 p.m.	Capitol Advisors Group: The Latest News From Sacramento
	Afternoon Breakout Session 3 1:30-2:45 p.m.	The Role of the Board in Labor Negotiations
	Afternoon Breakout Session 4 1:30-2:45 p.m.	Controlling Employee Leaves Through Contract Language
	Afternoon Breakout Session 5 3:00-4:15 p.m.	Demystifying Impasse and Fact-finding
	Afternoon Breakout Session 6 3:00-4:15 p.m.	Ensuring Safe School Environments in Compliance with Title IX
	Dinner 6:00 p.m. 	Dinner at F. McLintock's - 750 Mattie Road, Shell Beach, CA 93449
	Friday, April 22, 2016 9:00-9:30 a.m.	Continental Breakfast/Networking
	Morning General Session 9:30-11:00 a.m.	High Pressure Tactics on the Road to Labor Settlements <i>Special Guest Speaker</i>
	11:00-11:30 a.m.	Traditional Prize Raffle
	12:00 p.m.	Hotel Checkout

School Districts of San Diego County
INTERDISTRICT ATTENDANCE AGREEMENT

This agreement made and entered into this 1 day of March, 2016 by and between the La Mesa-Spring Valley School District of San Diego County and the Dehesa School District of San Diego County is effective only for the school year(s) 2016 through 2021 (up to 5 years) and neither party is bound by any of the covenants herein contained after the expiration of said school year.

The above mentioned parties mutually agree as follows:

1. Each of the districts will accept, insofar as facilities permit, students who are residents of the other said district who have proper permits for attendance from the district superintendent or his designee of the school district of residence who are eligible to attend the classes of the schools operated by the district of attendance, and who are acceptable to said district of attendance.
2. The respective school districts will furnish the said pupils the same advantages, supplies, and regular instructional services as are furnished to the pupils in attendance in at their respective schools, exclusive of transportation to and from said schools unless special arrangements are previously agreed upon.
3. In accordance with Education Code Section 46607, the attendance of said pupils shall be credited as follows (check appropriate boxes):
 - The attendance shall be credited to the district of attendance with the district of attendance assuming all costs of education unless other arrangements are jointly agreed upon.
 - Districts with 25 percent or more reduction in PL 81- 874 funds as a result of interdistrict attendance: The attendance shall be credited to the district of residence with tuition — not to exceed the actual cost per ADA for the grade level or program less any income, other than tuition, received by the district of attendance on account of such attendance — to be paid to the district of attendance.
 - Consortium of School Districts Operating Adult Programs: The attendance may be credited on the basis of the district of residence with interdistrict tuition paid to the district of attendance as agreed to by the participating districts.
4. Final payment, if any, to be made to the district of attendance no later than August 31, after the close of the fiscal year.

IN WITNESS WHEREOF, the governing boards of said districts have approved this agreement on the dates indicated below and authorized their representatives to sign it in their behalf.

La Mesa-Spring Valley School District

As per district policy or regulations the terms of revocation of student interdistrict contract are as follows:

- Discipline Attendance Academics

District appeal process as follows:

1. School Principal
2. Director, Student Support
3. Asst. Supt. Learning Support

The application deadline of January 1 has been waived Yes No

Signature [Signature]

Title Director, Student Support

Approved by the Governing Board on:

Date March 1, 2016

District schools/programs known to be impacted at the time of this agreement:

Dehesa School District

As per district policy or regulations the terms of revocation of student interdistrict contract are as follows:

- Discipline Attendance Academics

District appeal process as follows:

1. _____
2. _____
3. _____

The application deadline of January 1 has been waived Yes No

Signature _____

Title _____

Approved by the Governing Board on:

Date _____

District schools/programs known to be impacted at the time of this agreement:

The canary copy of this agreement should be filed with the County Office **ONLY** if tuition is to be paid by a San Diego County school district to the district of attendance.

DEHESA SCHOOL DISTRICT

Board of Trustees

Karl Becker, 2018
Christina Becker, 2018
Jeff F. Royal, 2016
Derek Voth, 2016
Cindy K. White, 2018

"Excellence in Education Since 1876"

4612 Dehesa Road
El Cajon, CA 92019

Superintendent

Nancy Hauer
Principal
Tamara Ripke
Business Manager
Lori Wigg

Telephone (619) 444-2161 / Fax (619) 444-2161

Parental Notification Letter Regarding the Advancement in Program Improvement, Year 3 for Local Educational Agency

2/21/16

Dear Parents/Guardians of Students in Dehesa School:

This is to inform you that Dehesa School advances as a Program Improvement (PI) local educational agency (LEA) in Year 3 under the federal Elementary and Secondary Education Act (ESEA) of 1965, as amended. The ESEA requires the California Department of Education (CDE) to annually review the student academic progress of federally funded Title I LEAs and schools and to identify LEAs and schools in need of improvement. An LEA is identified as a PI LEA if it fails to meet yearly student performance goals, known as Adequate Yearly Progress (AYP), for two consecutive reporting cycles.

Why is our LEA advancing in PI?

The U.S. Department of Education (ED) invited states to apply for a one-year waiver that would allow PI determinations to be made using **only** the participation rate, attendance rate, and graduation rate for the 2014–15 school year. California applied for the waiver and the ED has approved this waiver request.

As a result, Title I funded schools and LEAs will:

- Be identified for PI if they miss AYP in the same content area for two AYP reporting cycles, or miss the same additional indicator for two AYP reporting cycles.
- Advance in PI if they miss the participation rate or the additional indicator (attendance rate for transitional kindergarten through grade eight schools

and unified LEAs and the graduation rate for high schools and high school LEAs).

Our LEA advances in PI because it:

Did not meet the AYP targets for two reporting cycles

As an LEA advancing to PI Year 3 Dehesa School must assign a Corrective Action:

For newly identified PI Year 3 LEAs (Assigned a Corrective Action):

The ESEA also requires the California State Board of Education (SBE) to determine a corrective action for each PI Year 3 LEA. Corrective action is the collective name given to the steps an LEA must take that substantially and directly respond to instructional, managerial, and organizational issues in the LEA and that will lead to students

Achieving proficiency in the core academic subjects of English-language arts (ELA) and mathematics.

As a newly identified PI Year 3, Corrective Action LEA, **Dehesa** must implement the following corrective action(s):

- Reserve an amount equal to 10 percent of its Title I allocation to provide professional development for teachers and administrators to strengthen the academic achievement of the LEA's students determined to be in greatest need of assistance.
- Revise the LEA Plan, as necessary, to document steps to fully implement the SBE-assigned corrective action. We must consult with parent/guardians and school staff when revising and implementing the LEA Plan, which will include information on how we plan to use Title I and other funds to improve student achievement. We will continue to post the approved LEA Plan on our LEA Web site.
- Analyze annually NWEA MAP scores to monitor progress. We will consult with students, staff, parents and the school Board to share information regarding progress on goals.

How can parents/guardians help the LEA improve?

Research shows that strong parental involvement leads to student success at

school. Here are some suggestions to help you work with your school and county to support improvements:

- Learn more about the ESEA requirements and become aware of strategies to improve student academic achievement. Additional information and resources are available at the following Web sites:
 - The CDE Title I, Part A Web page at <http://www.cde.ca.gov/sp/sw/t1/titleparta.asp>
 - The CDE Program Improvement Status Determinations Web Page at <http://www.cde.ca.gov/ta/ac/ay/tidetermine.asp>
 - The ED Web site at <http://www.ed.gov> and <http://www2.ed.gov/parents/landing.jhtml>
- Request and receive information regarding the professional qualifications of your child's teacher(s).
- Talk with LEA staff about the LEA Plan and the revisions that must be made to help students meet the state standards in ELA and mathematics.
- Visit your child's school. You may also participate in voluntary activities to assist your school or LEA.

If you are a parent/guardian of a student who attends a Title I PI school, ask your school about school choice options to transfer your child, with paid transportation, to a public school in your LEA that is not identified as a PI school.

If you are a parent/guardian of a student who attends a Title I school that has been in PI for two reporting cycles or more, ask your school about supplemental educational services, or free tutoring, that may be available for your child.

I encourage you to contact Nancy Hauer (619) 444-2161 or nancy.hauer@dehesasd.net for further information about any of these requirements and to find out how you can become involved in our efforts to improve Dehesa School.

Sincerely,



Nancy Hauer
Dehesa School District



SAN DIEGO COUNTY OFFICE OF EDUCATION

6401 Linda Vista Road, San Diego, CA 92111 • 858-292-3500 • www.sdcoe.net
Randolph E. Ward, Ed.D., Superintendent of Schools

March 4, 2016

To: Members of the Governing Board and Superintendent
Dehesa School District

From: County Superintendent of Schools

Re: Public Hearing on Change of Election System and Establishment of Trustee Areas for the
Governing Board of the Grossmont Union High School District

This memo is to notify you of public hearings on the above-referenced matter to be held as follows:

- March 17, 2016, 6:00 p.m., La Mesa-Spring Valley School District
- March 28, 2016, 6:00 p.m., Grossmont Union High School District
- April 5, 2016, 6:00 p.m., Jamul-Dulzura Union School District
- April 11, 2016, 6:00 p.m., Lakeside Union School District

Enclosed are a Notice of Public Hearing (in English, Spanish, and Arabic) and the guidelines for conduct of the hearings. We would appreciate any assistance you can provide to make your school community and other members of the public aware of these opportunities to present their views on the proposal.

The enclosed documents are also available on the San Diego County Office of Education website at www.sdcoe.net/board. Additional information will be made available on this web page prior to the public hearings.

If you have any questions, please contact Lora Duzyk, at (858) 292-3618, or Peg Marks, Legal Services Analyst, at (858) 292-3746.

Randolph E. Ward
County Superintendent of Schools

By



Lora L. Duzyk, Deputy

REW:LLD:MM
Enclosures

Service and leadership that maximize the success of all students

Board of Education

Mark C. Anderson Guadalupe González Alicia Muñoz Gregg Robinson Rick Shea

NOTICE OF PUBLIC HEARINGS
PROPOSED CHANGE OF ELECTION SYSTEM
AND ESTABLISHMENT OF TRUSTEE AREAS
FOR THE GOVERNING BOARD OF
THE GROSSMONT UNION HIGH SCHOOL DISTRICT

You are hereby notified that resolutions have been filed with this office in accordance with Education Code section 5019 for a change of election system and the establishment of trustee areas for the Governing Board of the Grossmont Union High School District.

YOU WILL THEREFORE TAKE NOTICE that public hearings on this matter will be held by the Board of Education, San Diego County, acting as the County Committee on School District Organization, as follows:

March 17, 2016, 6:00 p.m.

La Mesa-Spring Valley School District
Board Room
4750 Date Avenue
La Mesa, CA 91942

April 5, 2016, 6:00 p.m.

Jamul Intermediate School Library
14545 Lyons Valley Road
Jamul, CA 91935

March 28, 2016, 6:00 p.m.

East County Regional Education Center
924 East Main Street
El Cajon, CA 92021

April 11, 2016, 6:00 p.m.

Lakeside Union School District
Administration Center
12335 Woodside Avenue
Lakeside, CA 92040

Guidelines for conduct of the public hearing are available at www.sdcoe.net/board or by contacting Brenda Gomez, Executive Assistant to the County Board of Education, at brenda.gomez@sdcoe.net or (858) 292-3515.

March 7, 2016

RANDOLPH E. WARD, Ed.D.
County Superintendent of Schools
San Diego County, California

**SAN DIEGO COUNTY COMMITTEE ON SCHOOL DISTRICT ORGANIZATION
GUIDELINES FOR PUBLIC HEARINGS
PROPOSED CHANGE TO BY-TRUSTEE AREA ELECTIONS FOR THE GOVERNING BOARD
OF THE GROSSMONT UNION HIGH SCHOOL DISTRICT**

March 17, 2016, 6:00 p.m.

La Mesa-Spring Valley School District Board Room
4750 Date Avenue
La Mesa, CA 91942

April 5, 2016, 6:00 p.m.

Jamul Intermediate School Library
14545 Lyons Valley Road
Jamul, CA 91935

March 28, 2016, 6:00 p.m.

East County Regional Education Center
924 East Main Street
El Cajon, CA 92021

April 11, 2016, 6:00 p.m.

Lakeside Union School District Admin. Center
12335 Woodside Avenue
Lakeside, CA 92040

The recording secretary will tape-record the entire meeting.

Prior to the opening of the public hearing, participants will be asked to provide their names and addresses on an attendance sheet. The completion of the document is voluntary, and all persons may attend the meeting regardless of whether a person signs the sheet.

Persons wishing to address the County Board must complete a blue speaker registration card, indicating whether they wish to support or oppose the proposal. Alternatively, a pink information card may be used to submit comments and/or indicate support or opposition in writing.

The President of the County Board of Education, acting as the County Committee on School District Organization, shall announce the opening of the public hearing and ask all those present and desiring to speak for or against the proposal to turn in a completed speaker card to the secretary. Speaker cards will also be collected during the hearing.

1. The order of speakers will be as follows:
 - Spokesperson(s) for the Grossmont Union High School District
 - Individual speakers called from speaker cards in the order submitted
2. The designated spokesperson(s) for the school district shall have 10 minutes for an initial presentation.
3. Individual speakers shall have up to 3 minutes to present testimony. The Board President may reduce the time allotted to each speaker based upon the number of requests to speak. Speakers shall direct all testimony to the County Committee. Individual speakers will be requested to limit remarks to new information regarding the proposal and will not be permitted to cede any of their allotted time to another speaker.
4. County Committee members may address questions through the President to any speaker.
5. When all persons desiring to speak on the proposal have been heard, the President shall declare the public hearing closed.
6. The County Committee on School District Organization will not take action on the proposal to establish by-trustee area elections or the trustee area plan at the public hearing. It is anticipated that the County Committee will approve or disapprove the proposal at its regular meeting on April 13, 2016.

Written information submitted for the County Committee's review must be provided to the County Office of Education no later than 5:00 p.m. on Thursday, April 7, to ensure distribution to committee members and the school district at least 24 hours prior to the April 13, 2016 meeting.



County of San Diego

MICHAEL VU
Registrar of Voters

REGISTRAR OF VOTERS
County Operations Center Campus
5500 Overland Avenue, Suite 100, San Diego, California 92123-1268

CYNTHIA L. PAES
Assistant Registrar of Voters

Telephone: (658) 565-5600 Toll-free: 1 (800) 856-0136 TDD: (658) 694-3441
Facsimile: (658) 694-2955 Web Address: www.sdvote.com

February 04, 2016

DEHESA ELEMENTARY SCHOOL
DEHESA SCHOOL DISTRICT
4612 DEHESA RD
EL CAJON CA 92019

Poll Id: 2726
Poll Precinct: 555820
Community: DEHESA
Poll Rating: 30
Poll Type: SC11
Area: R1B

Dear Poll Owner/ Representative:

On behalf of the Registrar of Voters, thank you for your past participation by either hosting a poll site or standing by for future use.

Pursuant to Election Code Section 12283: "Authorization for the Use of Schools and Other Public Buildings, if a city or county elections official specifically requests the use of a school building for polling places on an Election Day, the governing body having jurisdiction over the particular school building shall allow its use for the purpose requested."

In accordance with the above-cited Election Code Section, at this time we are informing you that the following site may be needed as a poll site or may need to be available as a reserve poll site:

**DEHESA ELEMENTARY SCHOOL
4612 DEHESA RD**

We may need this property as a poll site for the **Presidential Primary Election**, which will be held **Tuesday, June 7, 2016**. The poll workers would arrive at **5:30 a.m.** and would work as late as **10:00 p.m.** on Election Day. The poll site would be open for voting from 7:00 a.m. until 8:00 p.m. (*Election Code Section 14212*)

If your property is *selected* as a poll site for Election Day, you will receive a confirmation letter in the mail approximately 6 weeks prior to Election Day.

If your property is *not selected* as a poll site for Election Day, you will receive a notification letter in the mail approximately 5 weeks prior to Election Day and we will keep it as a reserve poll site.

One Touch Screen Voting Unit will be used for this election and an electrical outlet will be needed.

Please complete the enclosed form and return it to us no later than **March 4, 2016** either by mail (in the self-addressed postage-paid envelope provided), by fax at (658) 694-2955, or by email at orlando.bermio@sdcounty.ca.gov.

We look forward to working together again. The service you provide to the voters of your community and your continued partnership with the San Diego County Registrar of Voters is appreciated. If you have any questions, please call Orlando Bermio at (658) 505-7361. Thank you!

Sincerely,

Orlando Bermio
Sr. Precinct Planning Technician

Enc.

San Diego County Registrar of Voters

Poll Site Information Form
Presidential Primary Election
Tuesday, June 7, 2016

February 04, 2016

Poll: DEHESA ELEMENTARY SCHOOL
Owner: DEHESA SCHOOL DISTRICT
4612 DEHESA RD
EL CAJON CA 92019

Poll Id: 2726
Poll Precinct: 555820
Community: DEHESA
Poll Rating: 30
Poll Type: SCH
Area: R1B

Poll Site Name and Address: DEHESA ELEMENTARY SCHOOL
4612 DEHESA RD
EL CAJON CA 92019

Poll Contact Name

Nancy Hauer SUPERINTENDENT

Phone1 (Home/Bus)

(619) 444-2161

Phone2 (Cell/Other)

0 -

Poll Owner Name

DEHESA SCHOOL DISTRICT

Phone1 (Home/Bus)

(619) 444-2161

Phone2 (Cell/Other)

0 -

School Administrator/Principal

Nancy Hauer Superintendent

Phone1 (Home/Bus)

Phone2 (Cell/Other)

Emergency Contact Information (Name and Phone Number)

Nancy Hauer

Poll Site Phone:

(619) 444-2161

IS THE POLL SITE NAME AND ADDRESS, CONTACT, AND FACILITY INFORMATION CORRECT? If NO, update as necessary.

NO YES

IS KEY PICK-UP REQUIRED? Current key pick-up instructions:

NO YES

MAY WE USE THE SAME ROOM? If NO, please specify which room to use

NO YES

IS THIS SITE PROVIDED FREE OF CHARGE? If NO, you will be paid \$50 for the poll location and an additional \$20 if you supply the table and chairs. Our records indicate you would like a payment of: \$0.00 + \$0.00

NO YES

CAN YOU PROVIDE 1 TABLE AND 5-6 CHAIRS? Our records indicate you would like the Registrar of Voters to deliver: 0 Table(s) + 0 Chairs

NO YES

Nancy Hauer
Poll Owner/Representative's Signature Date:

Pursuant to Election Code Section 12287: A candidate's residence shall not be designated as a polling place for an election at which that candidate's name will appear on the ballot. Contact us if you have any questions.
Pursuant to Election Code Section 12288: A polling place may not be connected by a door, window, or other opening with any place where any alcoholic beverage is sold or dispensed while the polls are open.
Pursuant to Election Code Section 18370 (d): No person, on election day, or at any time that a voter may be casting a ballot, shall, within 100 feet of a polling place or an elections official's office, do any electioneering. Any persons who violates any of the provisions of this section is guilty of a misdemeanor.
Please return this form to us no later than March 4, 2016. Thank You!



CALIFORNIA
DEPARTMENT OF
EDUCATION

TOM TORLAKSON
STATE SUPERINTENDENT OF PUBLIC INSTRUCTION

February 29, 2016

Dear County and District Superintendents and Charter School Administrators:

EVERY STUDENT SUCCEEDS ACT UPDATE

The purpose of this letter is to update you on the newly enacted Every Student Succeeds Act (ESSA) based on information we received from the U.S. Department of Education (ED) in letters dated January 28, 2016, February 2, 2016, and February 5, 2016. The ED has also begun a proposed rulemaking process to establish regulations for ESSA. As part of this process, the ED has developed Frequently Asked Questions for Transitioning to the Every Student Succeeds Act that is available on the ED Web site at <http://www2.ed.gov/policy/elsec/leg/essa/faq/essa-faqs.pdf>. We will continue to provide updates as information becomes available.

Title I Assessment

States and districts may be able to use current Federal formula grant funds, still in effect at least through the 2016–17 school year, under the ESSA, to:

- Conduct assessment audits to eliminate redundancy and ensure efficacy and quality of assessments;
- Facilitate professional development for educators to enhance the use of assessment results, including performance-based assessments, to improve instruction; and
- Increase transparency and timeliness of information for students and parents/guardians.

ESSA maintains the important statewide assessments every year from grades three through eight and once in high school, while balancing the need to provide students, parents, and teachers with information necessary to improve teaching and learning.

Title I Program Improvement

Although most of the new accountability provisions of the ESSA will not take effect until the 2017–18 school year, the guidance allows States the flexibility to *not* require local educational agencies (LEAs) to provide Supplemental Educational Services (SES),

February 29, 2016

Page 2

Public School Choice (Choice), and the related notice to parents for the 2016–17 school year. The California Department of Education (CDE) will be presenting a One-Year Transition Plan to identify possible alternatives for replacing the requirements of SES, Choice, and notification to parents for the 2016–17 school year. This plan will be presented at the State Board of Education (SBE) Meeting in May 2016. The plan will be posted no later than Friday, May 6, 2016.

LEAs and schools identified for Program Improvement (PI), corrective action, or restructuring in school year 2015–16 must continue to implement improvement activities in school year 2016–17, consistent with the Transition Plan or locally identified improvement activities.

Title I, Part C Migrant

Similar to other programs, the new allocation formula, definitions, and priority of services that include pre-Kindergarten and out-of-school youth will be in effect in school year 2017–18.

Title II Professional Development

The most recent letter from the ED states:

“In addition to the AMAOs mentioned above and the annual measurable objectives (AMOs) mentioned in my letter of December 18, 2015, there are additional provisions of the ESEA, as reauthorized by NCLB, along with their implementing regulations, that States are **not** required to implement in the 2016-2017 school year in order to facilitate an orderly transition to the ESSA. These provisions are as follows: section 1119, which requires all teachers of core academic subjects in the State to be “highly qualified”^{1,2}; section 2141, which requires LEAs not making progress toward all teachers being “highly qualified” to create and implement an improvement plan and requires the State to provide technical assistance to such LEAs; and section 1117, which requires States to provide certain types of school supports and recognition.”

CDE staff are in the process of determining appropriate next steps for California’s transition to the new law in light of this new guidance. LEAs that were previously notified regarding placement in the Compliance Monitoring, Intervention, and Sanctions (CMIS) program for 2016–17 will soon receive additional information regarding participation in CMIS in a separate communication.

February 29, 2016
Page 3

We appreciate your continued commitment to ensuring that all students have access to well-qualified educators and anticipate that we will have more information for LEAs regarding highly qualified teacher (HQT) requirements in the coming weeks.

Title III English Learners and Immigrant Students

There is no new information to report at this time.

Title IV 21st Century Schools

There is no new information to report at this time.

Local Control Funding Formula and Local Control and Accountability Plans

Following the March 2016 SBE meeting, CDE and SBE staff will provide detailed suggestions regarding proposed revisions to the Local Control and Accountability Plan (LCAP) and Annual Update template, for possible adoption by the State Board at its September 2016 meeting. Feedback from many stakeholders and various reports and research briefs have identified common themes around possible improvements to the current LCAP and Annual Update template. Given the timeline for the revision and adoption of the LCAP and Annual Update, stakeholders will have substantial opportunities to review draft components and prototypes of the revised LCAP template and to offer input and recommendations prior to the SBE's adoption. The revisions to the LCAP template, in conjunction with the Local Control Funding Formula (LCFF) evaluation rubrics, will guide the approach to integrate the new federal accountability requirements through the ESSA State Plan and at the local level through the ESSA LEA Plan. The changes to the LCAP template are expected to become effective in the 2017–18 school year.

If you have any questions regarding this letter, please contact:

Title I Accountability: Jenny Singh, Administrator, Academic Accountability Unit, by phone at 916-319-0437 or by e-mail at jsingh@CDE.ca.gov.

Title I Assessment: Jessica Barr, Administrator, Assessment Development and Administration Division, by phone at 916-319-0803 or by email at jbarr@cde.ca.gov.

Title I Program Improvement: Keith Coppage, Administrator, District Innovation and Improvement Office, by phone at 916-319-0599 or by e-mail at kcoppage@CDE.ca.gov.

February 29, 2016

Page 4

Title I, Part C Migrant: Celina Torres, Administrator, Migrant Education Office, by phone at 916-319-0230 or by e-mail at ctorres@cde.ca.gov.

Title II Professional Development: Carrie Roberts, Director, Professional Learning Support Division, by phone at 916-324-6599 or by e-mail at croberts@cde.ca.gov.

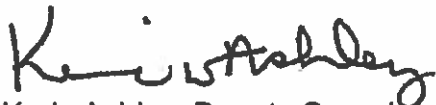
Title III English Learners and Immigrant Students: Elena Fajardo, Administrator, Language Policy and Leadership Office, by phone at 916-319-0247 or by e-mail at efajardo@CDE.ca.gov.

Title III Accountability: Jonathan Isler, Administrator, Data Visualization Reporting Office, by phone at 916-319-0306 or by email at jisler@CDE.ca.gov.

Title IV 21st Century Schools: John Hooper, Federal Policy Liaison, Government Affairs Division, by phone at 916-319-0650 or by e-mail at jhooper@cde.ca.gov.

Local Control and Accountability Plans: Jeff Breshears, Director, Local Agency Systems Support, by phone at 916-319-0303 or by e-mail at jbreshears@CDE.ca.gov.

Sincerely,



Keric Ashley, Deputy Superintendent
District, School, and Innovation Branch

KA:kh

DEHESA SCHOOL DISTRICT

To: Members of the Board
and Supt. Nancy Hauer

From: Lori Wigg
Business Manager

Subject: Monthly Budget Update

Meeting Date: March 14, 2016

- Action
- First Reading
- Information
- Presentation
- Discussion
- Public Hearing
- Roll Call Vote Required

Background:

At the October 20, 2011 Board Meeting, Members were asked about their preferences for monthly budget updates. Consensus was that a statement of fund balances and clear, concise updates on key issues would be preferred during months falling in-between major reports.

Report:

Attached are the fund balances (cash in County Treasury) and the construction expenditure reports for the Bond and Developer Fee Funds.

Financial Impact:

N/A-Form Informational Purposes Only

Student Impact:

NA – For Informational Purposes Only

Recommendation:

NA – For Informational Purposes Only

Agenda Item #:VI.B.1

Dehesa School District

Cash Balances

(Cash in County Treasury as of March 3, 2016)

FUND	DESCRIPTION	BALANCE
01-00	GENERAL FUND	\$809,733
09-00	CHARTER SCHOOLS SPECIAL REVENUE FUND	\$128,128
12-06	CHILD DEVELOPMENT FUND	\$13,071
13-00	CAFETERIA SPECIAL REVENUE FUND	\$4,482
14-00	DEFERRED MAINTENANCE FUND	\$106,763
17-42	SPECIAL RESOURCE FUND (CHARTER OVERSIGHT)	\$478,131
20-00	SPECIAL RESERVE OPEB/RETIREE BENEFITS FUND	\$67,788
21-39	BUILDING FUND	\$935,242
25-19	CAPITAL FACILITIES/SB2068 FUND	\$632,890
40-00	SPECIAL RESERVES/CAPITAL PROJECTS	\$7,451

Please note that cash balances in the General Fund fluctuate on a regular basis. This is a normal feature of the fluid budget/accounting process.

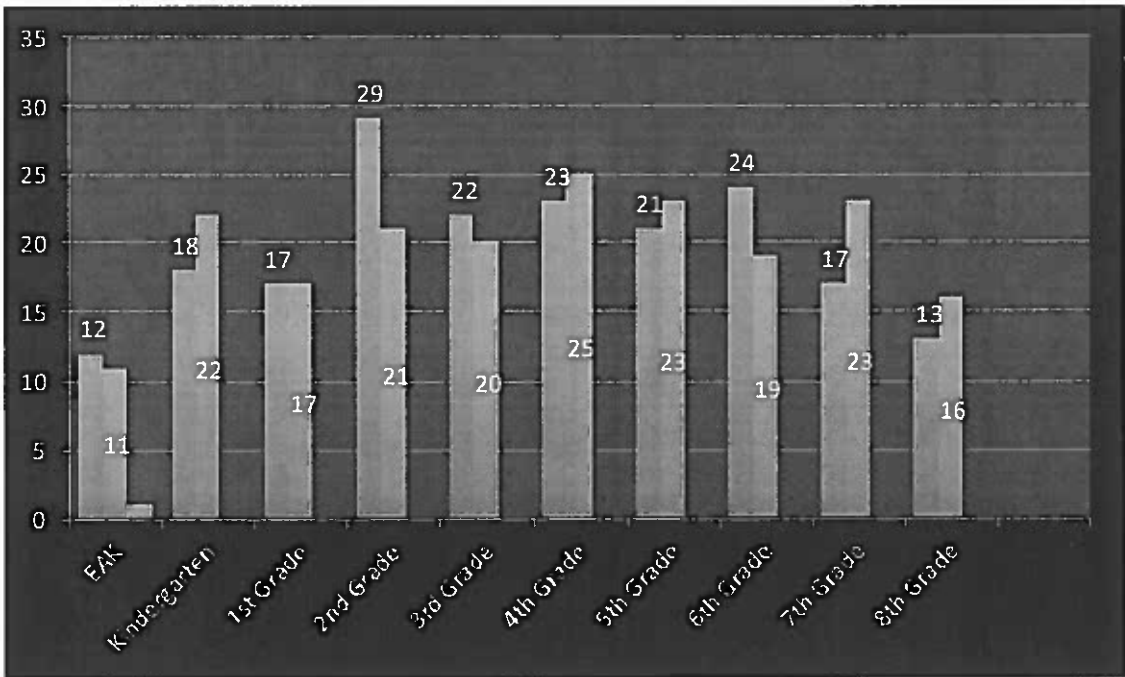
DEHESA SCHOOL DISTRICT

To: Members of the Board
From: Nancy Hauer
Subject: Dehesa School Enrollment
as March 14, 2016

- Meeting Date: March 14, 2016
- Action
 - First Reading
 - Information
 - Presentation
 - Public Hearing
 - Roll Call Vote Required
 - Discussion

<u>End-of-the-Year Enrollment</u>	
By Grade Level	
EAK.....	12
Kindergarten	18
1st Grade	17
2nd Grade	29
3rd Grade.....	22
4th Grade	23
5th Grade	21
6th Grade	24
7th.....	17
8th.....	13
	196

<u>2015-2016 Enrollment</u>	
By Grade Level	
EAK	11
Kindergarten	22
1st Grade.....	17
2nd Grade.....	21
3rd Grade	20
4th Grade.....	25
5th Grade.....	23
6th Grade.....	19
7th.....	23
8th.....	16
	197



DEHESA SCHOOL DISTRICT

To: Members of the Board and
Supt. Nancy Hauer

From: Lori Wigg

Subject: 2015-16 Second Interim
Report

Meeting Date: March 14, 2016

- Action
- First Reading
- Information
- Presentation
- Discussion
- Public Hearing
- Roll Call Vote Required

Background:

Assembly Bill 2861 requires that school districts prepare and submit interim financial reports so that Governing Boards, the State Controller, and the Superintendent of Public Instruction are informed of school districts' financial condition for the current and future years. Governing Boards are required to complete either a positive, qualified, or negative certification regarding the district's ability to meet its financial obligations.

Report:

Attached is the 2015-16 Second Interim financial report including State required forms for financial activities as of January 31, 2016. The report indicates that the District qualifies for a Positive Certification and will be able to meet its financial obligations for 2015-16 and the two subsequent fiscal years.

Financial Impact:

The projected ending funding balance on the Second Interim Financial report is \$476,831. The net increase in fund balance for restricted and unrestricted funds combined is projected at \$19,296.

Student Impact:

The Second Interim report does not include any reduction in services currently provided to Dehesa students.

Recommendation:

It is recommended that the Board approve the attached Second Interim report.

Agenda Item #: VIII.C.1

NOTICE OF CRITERIA AND STANDARDS REVIEW. This interim report was based upon and reviewed using the state-adopted Criteria and Standards. (Pursuant to Education Code (EC) sections 33129 and 42130)

Signed: _____
District Superintendent or Designee

Date: _____

NOTICE OF INTERIM REVIEW. All action shall be taken on this report during a regular or authorized special meeting of the governing board.

To the County Superintendent of Schools:

This interim report and certification of financial condition are hereby filed by the governing board of the school district. (Pursuant to EC Section 42131)

Meeting Date: March 14, 2016

Signed: _____
President of the Governing Board

CERTIFICATION OF FINANCIAL CONDITION

POSITIVE CERTIFICATION

As President of the Governing Board of this school district, I certify that based upon current projections this district will meet its financial obligations for the current fiscal year and subsequent two fiscal years.

QUALIFIED CERTIFICATION

As President of the Governing Board of this school district, I certify that based upon current projections this district may not meet its financial obligations for the current fiscal year or two subsequent fiscal years.

NEGATIVE CERTIFICATION

As President of the Governing Board of this school district, I certify that based upon current projections this district will be unable to meet its financial obligations for the remainder of the current fiscal year or for the subsequent fiscal year.

Contact person for additional information on the interim report:

Name: Lori Wigg

Telephone: (619) 444-2161

Title: Business Manager

E-mail: lori.wigg@dehesasd.net

Criteria and Standards Review Summary

The following summary is automatically completed based on data provided in the Criteria and Standards Review form (Form 01CSI). Criteria and standards that are "Not Met," and supplemental information and additional fiscal indicators that are "Yes," may indicate areas of potential concern, which could affect the interim report certification, and should be carefully reviewed.

CRITERIA AND STANDARDS			Met	Not Met
1	Average Daily Attendance	Funded ADA for any of the current or two subsequent fiscal years has not changed by more than two percent since first interim.	X	

2015-16 Second Interim
General Fund
Unrestricted (Resources 0000-1999)
Revenues, Expenditures, and Changes in Fund Balance

Description	Resource Codes	Object Codes	Original Budget (A)	Board Approved Operating Budget (B)	Actuals To Date (C)	Projected Year Totals (D)	Difference (Col B & D) (E)	% Diff (E/B) (F)
A. REVENUES								
1) LCFF Sources		8010-8099	1,397,478.00	1,394,624.00	1,163,432.65	1,394,624.00	0.00	0.0
2) Federal Revenue		8100-8299	39,121.00	43,748.00	5,406.24	43,748.00	0.00	0.0
3) Other State Revenue		8300-8599	126,433.00	121,312.00	88,287.54	121,312.00	0.00	0.0
4) Other Local Revenue		8600-8799	388,330.00	826,476.00	91,891.59	826,476.00	0.00	0.0
5) TOTAL, REVENUES			1,951,362.00	2,386,160.00	1,349,018.02	2,386,160.00		
B. EXPENDITURES								
1) Certificated Salaries		1000-1999	733,308.00	708,153.00	359,186.04	708,153.00	0.00	0.0
2) Classified Salaries		2000-2999	403,888.00	407,371.22	237,463.04	407,371.22	0.00	0.0
3) Employee Benefits		3000-3999	335,249.84	344,482.31	186,374.92	344,482.31	0.00	0.0
4) Books and Supplies		4000-4999	88,820.06	96,089.67	45,817.76	96,089.67	0.00	0.0
5) Services and Other Operating Expenditures		5000-5999	195,853.00	210,915.82	123,470.00	210,915.82	0.00	0.0
6) Capital Outlay		6000-6999	800.00	0.00	0.00	0.00	0.00	0.0
7) Other Outgo (excluding Transfers of Indirect Costs)		7100-7299 7400-7499	0.00	0.00	0.00	0.00	0.00	0.0
8) Other Outgo - Transfers of Indirect Costs		7300-7399	(467.00)	(2,990.00)	0.00	(2,990.00)	0.00	0.0
9) TOTAL, EXPENDITURES			1,757,451.90	1,764,022.02	952,311.76	1,764,022.02		
C. EXCESS (DEFICIENCY) OF REVENUES OVER EXPENDITURES BEFORE OTHER FINANCING SOURCES AND USES (A5 - B9)								
			193,910.10	622,137.98	396,706.26	622,137.98		
D. OTHER FINANCING SOURCES/USES								
1) Interfund Transfers								
a) Transfers In		8900-8929	31,200.00	0.00	0.00	0.00	0.00	0.0
b) Transfers Out		7600-7629	63,090.00	483,090.00	13,240.00	483,090.00	0.00	0.0
2) Other Sources/Uses								
a) Sources		8930-8979	0.00	0.00	0.00	0.00	0.00	0.0
b) Uses		7630-7699	0.00	0.00	0.00	0.00	0.00	0.0
3) Contributions		8980-8999	(141,377.00)	(70,784.92)	0.00	(70,784.92)	0.00	0.0
4) TOTAL, OTHER FINANCING SOURCES/USES			(173,267.00)	(553,874.92)	(13,240.00)	(553,874.92)		

2015-16 Second Interim
General Fund
Unrestricted (Resources 0000-1999)
Revenues, Expenditures, and Changes in Fund Balance

Description	Resource Codes	Object Codes	Original Budget (A)	Board Approved Operating Budget (B)	Actuals To Date (C)	Projected Year Totals (D)	Difference (Col B & D) (E)	% Diff (E/B) (F)
E. NET INCREASE (DECREASE) IN FUND BALANCE (C + D4)			20,643.10	68,263.06	383,466.26	68,263.06		
F. FUND BALANCE, RESERVES								
1) Beginning Fund Balance								
a) As of July 1 - Unaudited		9791	298,216.18	298,216.18		298,216.18	0.00	0.0
b) Audit Adjustments		9793	0.00	0.00		0.00	0.00	0.0
c) As of July 1 - Audited (F1a + F1b)			298,216.18	298,216.18		298,216.18		
d) Other Restatements		9795	0.00	0.00		0.00	0.00	0.0
e) Adjusted Beginning Balance (F1c + F1d)			298,216.18	298,216.18		298,216.18		
2) Ending Balance, June 30 (E + F1e)			318,859.28	366,479.24		366,479.24		
Components of Ending Fund Balance								
a) Nonspendable								
Revolving Cash		9711	6,000.00	6,000.00		6,000.00		
Stores		9712	0.00	0.00		0.00		
Prepaid Expenditures		9713	0.00	0.00		0.00		
All Others		9719	0.00	0.00		0.00		
b) Restricted		9740	0.00	0.00		0.00		
c) Committed								
Stabilization Arrangements		9750	0.00	0.00		0.00		
Other Commitments		9760	0.00	0.00		0.00		
d) Assigned								
Other Assignments		9780	37,225.26	57,930.02		57,930.02		
e) Unassigned/Unappropriated								
Reserve for Economic Uncertainties		9789	275,634.02	302,549.22		302,549.22		
Unassigned/Unappropriated Amount		9790	0.00	0.00		0.00		

2015-16 Second Interim
General Fund
Unrestricted (Resources 0000-1999)
Revenues, Expenditures, and Changes in Fund Balance

Description	Resource Codes	Object Codes	Original Budget (A)	Board Approved Operating Budget (B)	Actuals To Date (C)	Projected Year Totals (D)	Difference (Col B & D) (E)	% Diff (E/B) (F)
LCFF SOURCES								
Principal Apportionment State Aid - Current Year		8011	1,152,225.00	1,140,374.00	747,509.00	1,140,374.00	0.00	0.00
Education Protection Account State Aid - Current Year		8012	204,445.00	221,791.00	117,405.00	221,791.00	0.00	0.00
State Aid - Prior Years		8019	0.00	0.00	2,766.00	0.00	0.00	0.00
Tax Relief Subventions Homeowners' Exemptions		8021	4,791.00	4,725.00	2,338.08	4,725.00	0.00	0.00
Timber Yield Tax		8022	0.00	0.00	0.00	0.00	0.00	0.00
Other Subventions/In-Lieu Taxes		8029	0.00	0.00	0.00	0.00	0.00	0.00
County & District Taxes Secured Roll Taxes		8041	544,985.00	576,326.00	304,276.15	576,326.00	0.00	0.00
Unsecured Roll Taxes		8042	19,001.00	19,340.00	19,009.50	19,340.00	0.00	0.00
Prior Years' Taxes		8043	(709.00)	(286.00)	(57.19)	(286.00)	0.00	0.00
Supplemental Taxes		8044	183,324.00	206,463.00	89,965.44	206,463.00	0.00	0.00
Education Revenue Augmentation Fund (ERAF)		8045	(58,970.00)	(22,739.00)	0.00	(22,739.00)	0.00	0.00
Community Redevelopment Funds (SB 617/699/1992)		8047	0.00	0.00	0.00	0.00	0.00	0.00
Penalties and Interest from Delinquent Taxes		8048	0.00	0.00	0.00	0.00	0.00	0.00
Miscellaneous Funds (EC 41604) Royalties and Bonuses		8081	0.00	0.00	0.00	0.00	0.00	0.00
Other In-Lieu Taxes		8082	0.00	0.00	0.00	0.00	0.00	0.00
Less: Non-LCFF (50%) Adjustment		8089	0.00	0.00	0.00	0.00	0.00	0.00
Subtotal, LCFF Sources			2,049,092.00	2,145,994.00	1,283,211.98	2,145,994.00	0.00	0.00
LCFF Transfers								
Unrestricted LCFF Transfers - Current Year	0000	8091	0.00	0.00	0.00	0.00	0.00	0.00
All Other LCFF Transfers - Current Year	All Other	8091	0.00	0.00	0.00	0.00	0.00	0.00
Transfers to Charter Schools in Lieu of Property Taxes		8096	(651,614.00)	(751,370.00)	(119,779.33)	(751,370.00)	0.00	0.00
Property Taxes Transfers		8097	0.00	0.00	0.00	0.00	0.00	0.00
LCFF/Revenue Limit Transfers - Prior Years		8099	0.00	0.00	0.00	0.00	0.00	0.00
TOTAL, LCFF SOURCES			1,397,478.00	1,394,624.00	1,163,432.65	1,394,624.00	0.00	0.00
FEDERAL REVENUE								
Maintenance and Operations		8110	38,341.00	42,739.00	4,397.44	42,739.00	0.00	0.00
Special Education Entitlement		8181	0.00	0.00	0.00	0.00		
Special Education Discretionary Grants		8182	0.00	0.00	0.00	0.00		
Child Nutrition Programs		8220	0.00	0.00	0.00	0.00		
Forest Reserve Funds		8260	0.00	0.00	0.00	0.00	0.00	0.00
Flood Control Funds		8270	0.00	0.00	0.00	0.00	0.00	0.00
Wildlife Reserve Funds		8280	780.00	1,009.00	1,008.80	1,009.00	0.00	0.00
FEMA		8281	0.00	0.00	0.00	0.00	0.00	0.00
Interagency Contracts Between LEAs		8285	0.00	0.00	0.00	0.00	0.00	0.00
Pass-Through Revenues from Federal Sources		8287	0.00	0.00	0.00	0.00		
NCLB: Title I, Part A, Basic Grants Low-Income and Neglected	3010	8290						
NCLB: Title I, Part D, Local Delinquent Program	3025	8290						
NCLB: Title II, Part A, Teacher Quality	4035	8290						

2015-16 Second Interim
General Fund
Unrestricted (Resources 0000-1999)
Revenues, Expenditures, and Changes in Fund Balance

Description	Resource Codes	Object Codes	Original Budget (A)	Board Approved Operating Budget (B)	Actuals To Date (C)	Projected Year Totals (D)	Difference (Col B & D) (E)	% Diff (E/B) (F)
NCLB: Title III, Immigration Education Program	4201	8290						
NCLB: Title III, Limited English Proficient (LEP) Student Program	4203	8290						
NCLB: Title V, Part B, Public Charter Schools Grant Program (PCSGP)	4610	8290						
Other No Child Left Behind	3011-3020, 3026-3199, 4036-4126, 5510	8290						
Vocational and Applied Technology Education	3500-3699	8290						
Safe and Drug Free Schools	3700-3799	8290						
All Other Federal Revenue	All Other	8290	0.00	0.00	0.00	0.00	0.00	0.00
TOTAL, FEDERAL REVENUE			39,121.00	43,748.00	5,406.24	43,748.00	0.00	0.00
OTHER STATE REVENUE								
Other State Apportionments								
ROC/P Entitlement Prior Years	6360	8319						
Special Education Master Plan Current Year	6500	8311						
Prior Years	6500	8319						
All Other State Apportionments - Current Year	All Other	8311	0.00	0.00	0.00	0.00	0.00	0.00
All Other State Apportionments - Prior Years	All Other	8319	0.00	0.00	0.00	0.00	0.00	0.00
Child Nutrition Programs		8520	0.00	0.00	0.00	0.00		
Mandated Costs Reimbursements		8550	103,428.00	95,972.00	82,828.00	95,972.00	0.00	0.00
Lottery - Unrestricted and Instructional Materials		8560	23,007.00	25,340.00	5,459.54	25,340.00	0.00	0.00
Tax Relief Subventions								
Restricted Levies - Other								
Homeowners' Exemptions		8575	0.00	0.00	0.00	0.00		
Other Subventions/In-Lieu Taxes		8576	0.00	0.00	0.00	0.00		
Pass-Through Revenues from State Sources		8587	0.00	0.00	0.00	0.00	0.00	0.00
School Based Coordination Program	7250	8590						
After School Education and Safety (ASES)	6010	8590						
Charter School Facility Grant	6030	8590						
Drug/Alcohol/Tobacco Funds	6650, 6690	8590						
California Clean Energy Jobs Act	6230	8590						
Specialized Secondary	7370	8590						
American Indian Early Childhood Education	7210	8590						
Quality Education Investment Act	7400	8590						
Common Core State Standards Implementation	7405	8590						
All Other State Revenue	All Other	8590	0.00	0.00	0.00	0.00	0.00	0.00
TOTAL, OTHER STATE REVENUE			126,433.00	121,312.00	88,287.54	121,312.00	0.00	0.00

2015-16 Second Interim
General Fund
Unrestricted (Resources 0000-1999)
Revenues, Expenditures, and Changes in Fund Balance

Description	Resource Codes	Object Codes	Original Budget (A)	Board Approved Operating Budget (B)	Actuals To Date (C)	Projected Year Totals (D)	Difference (Col B & D) (E)	% Diff (E/B) (F)
OTHER LOCAL REVENUE								
Other Local Revenue								
County and District Taxes								
Other Restricted Levies								
Secured Roll		8615	0.00	0.00	0.00	0.00		
Unsecured Roll		8616	0.00	0.00	0.00	0.00		
Prior Years' Taxes		8617	0.00	0.00	0.00	0.00		
Supplemental Taxes		8618	0.00	0.00	0.00	0.00		
Non-Ad Valorem Taxes								
Parcel Taxes		8621	0.00	0.00	0.00	0.00	0.00	0.00
Other		8622	0.00	0.00	0.00	0.00	0.00	0.00
Community Redevelopment Funds								
Not Subject to LCFF Deduction		8625	0.00	0.00	0.00	0.00		
Penalties and Interest from Delinquent Non-LCFF Taxes								
		8629	0.00	0.00	0.00	0.00		
Sales								
Sale of Equipment/Supplies								
		8631	0.00	0.00	0.00	0.00	0.00	0.00
Sale of Publications								
		8632	0.00	0.00	0.00	0.00	0.00	0.00
Food Service Sales								
		8634	0.00	0.00	0.00	0.00	0.00	0.00
All Other Sales								
		8639	0.00	0.00	0.00	0.00	0.00	0.00
Leases and Rentals								
		8650	0.00	0.00	0.00	0.00	0.00	0.00
Interest								
		8660	2,500.00	2,204.00	1,394.16	2,204.00	0.00	0.00
Net Increase (Decrease) in the Fair Value of Investments								
		8662	0.00	0.00	0.00	0.00	0.00	0.00
Fees and Contracts								
Adult Education Fees								
		8671	0.00	0.00	0.00	0.00	0.00	0.00
Non-Resident Students								
		8672	0.00	0.00	0.00	0.00	0.00	0.00
Transportation Fees From Individuals								
		8675	0.00	0.00	0.00	0.00	0.00	0.00
Interagency Services								
		8677	373,830.00	783,144.00	57,698.98	783,144.00	0.00	0.00
Mitigation/Developer Fees								
		8681	0.00	0.00	0.00	0.00	0.00	0.00
All Other Fees and Contracts								
		8689	0.00	0.00	0.00	0.00	0.00	0.00
Other Local Revenue								
Plus: Misc Funds Non-LCFF (50%) Adjustment								
		8691	0.00	0.00	0.00	0.00	0.00	0.00
Pass-Through Revenues From Local Sources								
		8697	0.00	0.00	0.00	0.00		
All Other Local Revenue								
		8699	12,000.00	41,128.00	32,798.45	41,128.00	0.00	0.00
Tuition								
		8710	0.00	0.00	0.00	0.00	0.00	0.00
All Other Transfers In								
		8781-8783	0.00	0.00	0.00	0.00	0.00	0.00
Transfers Of Apportionments								
Special Education SELPA Transfers								
From Districts or Charter Schools	6500	8791						
From County Offices	6500	8792						
From JPAs	6500	8793						
ROC/P Transfers								
From Districts or Charter Schools	6360	8791						
From County Offices	6360	8792						
From JPAs	6360	8793						
Other Transfers of Apportionments								
From Districts or Charter Schools	All Other	8791	0.00	0.00	0.00	0.00	0.00	0.00
From County Offices	All Other	8792	0.00	0.00	0.00	0.00	0.00	0.00
From JPAs	All Other	8793	0.00	0.00	0.00	0.00	0.00	0.00
All Other Transfers In from All Others								
		8799	0.00	0.00	0.00	0.00	0.00	0.00
TOTAL, OTHER LOCAL REVENUE			388,330.00	826,476.00	91,891.59	826,476.00	0.00	0.00
TOTAL REVENUES			1,951,362.00	2,386,160.00	1,349,018.02	2,386,160.00	0.00	0.00

2015-16 Second Interim
General Fund
Unrestricted (Resources 0000-1999)
Revenues, Expenditures, and Changes in Fund Balance

Description	Resource Codes	Object Codes	Original Budget (A)	Board Approved Operating Budget (B)	Actuals To Date (C)	Projected Year Totals (D)	Difference (Col B & D) (E)	% Diff (E/B) (F)
Certificated Teachers' Salaries		1100	570,808.00	543,374.00	273,322.54	543,374.00	0.00	0.00
Certificated Pupil Support Salaries		1200	0.00	825.00	412.50	825.00	0.00	0.00
Certificated Supervisors' and Administrators' Salaries		1300	162,500.00	163,954.00	85,451.00	163,954.00	0.00	0.00
Other Certificated Salaries		1900	0.00	0.00	0.00	0.00	0.00	0.00
TOTAL, CERTIFICATED SALARIES			733,308.00	708,153.00	359,186.04	708,153.00	0.00	0.00
CLASSIFIED SALARIES								
Classified Instructional Salaries		2100	35,507.00	36,902.57	24,385.98	36,902.57	0.00	0.00
Classified Support Salaries		2200	166,479.00	173,018.15	96,364.39	173,018.15	0.00	0.00
Classified Supervisors' and Administrators' Salaries		2300	114,702.00	110,046.50	65,008.19	110,046.50	0.00	0.00
Clerical, Technical and Office Salaries		2400	80,000.00	80,204.00	47,504.48	80,204.00	0.00	0.00
Other Classified Salaries		2900	7,200.00	7,200.00	4,200.00	7,200.00	0.00	0.00
TOTAL, CLASSIFIED SALARIES			403,888.00	407,371.22	237,463.04	407,371.22	0.00	0.00
EMPLOYEE BENEFITS								
STRS		3101-3102	78,686.00	77,928.24	41,273.37	77,928.24	0.00	0.00
PERS		3201-3202	41,178.00	43,163.00	22,011.83	43,163.00	0.00	0.00
OASDI/Medicare/Alternative		3301-3302	40,815.00	41,104.00	22,848.22	41,104.00	0.00	0.00
Health and Welfare Benefits		3401-3402	120,790.84	127,606.07	66,180.04	127,606.07	0.00	0.00
Unemployment Insurance		3501-3502	568.00	563.00	296.26	563.00	0.00	0.00
Workers' Compensation		3601-3602	25,711.00	24,240.00	13,283.62	24,240.00	0.00	0.00
OPEB, Allocated		3701-3702	27,501.00	29,351.00	19,955.32	29,351.00	0.00	0.00
OPEB, Active Employees		3751-3752	0.00	0.00	0.00	0.00	0.00	0.00
Other Employee Benefits		3901-3902	0.00	527.00	526.26	527.00	0.00	0.00
TOTAL, EMPLOYEE BENEFITS			335,249.84	344,482.31	186,374.92	344,482.31	0.00	0.00
BOOKS AND SUPPLIES								
Approved Textbooks and Core Curricula Materials		4100	2,500.00	656.00	655.66	656.00	0.00	0.00
Books and Other Reference Materials		4200	1,770.06	0.00	0.00	0.00	0.00	0.00
Materials and Supplies		4300	82,550.00	84,273.67	40,989.49	84,273.67	0.00	0.00
Noncapitalized Equipment		4400	2,000.00	11,160.00	4,172.61	11,160.00	0.00	0.00
Food		4700	0.00	0.00	0.00	0.00	0.00	0.00
TOTAL, BOOKS AND SUPPLIES			88,820.06	96,089.67	45,817.76	96,089.67	0.00	0.00
SERVICES AND OTHER OPERATING EXPENDITURES								
Subagreements for Services		5100	0.00	0.00	0.00	0.00	0.00	0.00
Travel and Conferences		5200	17,800.00	11,951.00	1,917.88	11,951.00	0.00	0.00
Dues and Memberships		5300	2,100.00	5,841.00	5,180.86	5,841.00	0.00	0.00
Insurance		5400-5450	10,000.00	11,567.00	11,167.10	11,567.00	0.00	0.00
Operations and Housekeeping Services		5500	65,990.00	79,725.88	33,952.49	79,725.88	0.00	0.00
Rentals, Leases, Repairs, and Noncapitalized Improvements		5600	28,443.00	33,208.00	16,616.19	33,208.00	0.00	0.00
Transfers of Direct Costs		5710	0.00	0.00	0.00	0.00	0.00	0.00
Transfers of Direct Costs - Interfund		5750	0.00	0.00	0.00	0.00	0.00	0.00
Professional/Consulting Services and Operating Expenditures		5800	59,070.00	66,436.94	54,084.47	66,436.94	0.00	0.00
Communications		5900	12,450.00	2,186.00	551.01	2,186.00	0.00	0.00
TOTAL, SERVICES AND OTHER OPERATING EXPENDITURES			195,853.00	210,915.82	123,470.00	210,915.82	0.00	0.00

2015-16 Second Interim
General Fund
Unrestricted (Resources 0000-1999)
Revenues, Expenditures, and Changes in Fund Balance

Description	Resource Codes	Object Codes	Original Budget (A)	Board Approved Operating Budget (B)	Actuals To Date (C)	Projected Year Totals (D)	Difference (Col B & D) (E)	% Diff (E/B) (F)
CAPITAL OUTLAY								
Land		6100	0.00	0.00	0.00	0.00	0.00	0.00
Land Improvements		6170	0.00	0.00	0.00	0.00	0.00	0.00
Buildings and Improvements of Buildings		6200	0.00	0.00	0.00	0.00	0.00	0.00
Books and Media for New School Libraries or Major Expansion of School Libraries		6300	0.00	0.00	0.00	0.00	0.00	0.00
Equipment		6400	800.00	0.00	0.00	0.00	0.00	0.00
Equipment Replacement		6500	0.00	0.00	0.00	0.00	0.00	0.00
TOTAL, CAPITAL OUTLAY			800.00	0.00	0.00	0.00	0.00	0.00
OTHER OUTGO (excluding Transfers of Indirect Costs)								
Tuition								
Tuition for Instruction Under Interdistrict Attendance Agreements		7110	0.00	0.00	0.00	0.00	0.00	0.00
State Special Schools		7130	0.00	0.00	0.00	0.00	0.00	0.00
Tuition, Excess Costs, and/or Deficit Payments Payments to Districts or Charter Schools		7141	0.00	0.00	0.00	0.00	0.00	0.00
Payments to County Offices		7142	0.00	0.00	0.00	0.00	0.00	0.00
Payments to JPAs		7143	0.00	0.00	0.00	0.00	0.00	0.00
Transfers of Pass-Through Revenues								
To Districts or Charter Schools		7211	0.00	0.00	0.00	0.00	0.00	0.00
To County Offices		7212	0.00	0.00	0.00	0.00	0.00	0.00
To JPAs		7213	0.00	0.00	0.00	0.00	0.00	0.00
Special Education SELPA Transfers of Apportionments								
To Districts or Charter Schools	6500	7221						
To County Offices	6500	7222						
To JPAs	6500	7223						
ROC/P Transfers of Apportionments								
To Districts or Charter Schools	6360	7221						
To County Offices	6360	7222						
To JPAs	6360	7223						
Other Transfers of Apportionments	All Other	7221-7223	0.00	0.00	0.00	0.00	0.00	0.00
All Other Transfers		7281-7283	0.00	0.00	0.00	0.00	0.00	0.00
All Other Transfers Out to All Others		7299	0.00	0.00	0.00	0.00	0.00	0.00
Debt Service								
Debt Service - Interest		7438	0.00	0.00	0.00	0.00	0.00	0.00
Other Debt Service - Principal		7439	0.00	0.00	0.00	0.00	0.00	0.00
TOTAL, OTHER OUTGO (excluding Transfers of Indirect Costs)			0.00	0.00	0.00	0.00	0.00	0.00
OTHER OUTGO - TRANSFERS OF INDIRECT COSTS								
Transfers of Indirect Costs		7310	(467.00)	(2,990.00)	0.00	(2,990.00)	0.00	0.00
Transfers of Indirect Costs - Interfund		7350	0.00	0.00	0.00	0.00	0.00	0.00
TOTAL, OTHER OUTGO - TRANSFERS OF INDIRECT COSTS			(467.00)	(2,990.00)	0.00	(2,990.00)	0.00	0.00
TOTAL, EXPENDITURES			1,757,451.90	1,764,022.02	952,311.76	1,764,022.02	0.00	0.00

2015-16 Second Interim
General Fund
Unrestricted (Resources 0000-1999)
Revenues, Expenditures, and Changes in Fund Balance

Description	Resource Codes	Object Codes	Original Budget (A)	Board Approved Operating Budget (B)	Actuals To Date (C)	Projected Year Totals (D)	Difference (Col B & D) (E)	% Diff (E/B) (F)
INTERFUND TRANSFERS								
INTERFUND TRANSFERS IN								
From: Special Reserve Fund		8912	31,200.00	0.00	0.00	0.00	0.00	0.0
From: Bond Interest and Redemption Fund		8914	0.00	0.00	0.00	0.00	0.00	0.0
Other Authorized Interfund Transfers In		8919	0.00	0.00	0.00	0.00	0.00	0.0
(a) TOTAL, INTERFUND TRANSFERS IN			31,200.00	0.00	0.00	0.00	0.00	0.0
INTERFUND TRANSFERS OUT								
To: Child Development Fund		7611	0.00	0.00	0.00	0.00	0.00	0.0
To: Special Reserve Fund		7612	0.00	0.00	0.00	0.00	0.00	0.0
To: State School Building Fund/ County School Facilities Fund		7613	0.00	0.00	0.00	0.00	0.00	0.0
To: Cafeteria Fund		7616	0.00	0.00	0.00	0.00	0.00	0.0
Other Authorized Interfund Transfers Out		7619	63,090.00	483,090.00	13,240.00	483,090.00	0.00	0.0
(b) TOTAL, INTERFUND TRANSFERS OUT			63,090.00	483,090.00	13,240.00	483,090.00	0.00	0.0
OTHER SOURCES/USES								
SOURCES								
State Apportionments Emergency Apportionments		8931	0.00	0.00	0.00	0.00	0.00	0.0
Proceeds Proceeds from Sale/Lease-Purchase of Land/Buildings		8953	0.00	0.00	0.00	0.00	0.00	0.0
Other Sources Transfers from Funds of Lapsed/Reorganized LEAs		8965	0.00	0.00	0.00	0.00	0.00	0.0
Long-Term Debt Proceeds Proceeds from Certificates of Participation		8971	0.00	0.00	0.00	0.00	0.00	0.0
Proceeds from Capital Leases		8972	0.00	0.00	0.00	0.00	0.00	0.0
Proceeds from Lease Revenue Bonds		8973	0.00	0.00	0.00	0.00	0.00	0.0
All Other Financing Sources		8979	0.00	0.00	0.00	0.00	0.00	0.0
(c) TOTAL, SOURCES			0.00	0.00	0.00	0.00	0.00	0.0
USES								
Transfers of Funds from Lapsed/Reorganized LEAs		7651	0.00	0.00	0.00	0.00	0.00	0.0
All Other Financing Uses		7699	0.00	0.00	0.00	0.00	0.00	0.0
(d) TOTAL, USES			0.00	0.00	0.00	0.00	0.00	0.0
CONTRIBUTIONS								
Contributions from Unrestricted Revenues		8980	(141,377.00)	(70,784.92)	0.00	(70,784.92)	0.00	0.0
Contributions from Restricted Revenues		8990	0.00	0.00	0.00	0.00	0.00	0.0
(e) TOTAL, CONTRIBUTIONS			(141,377.00)	(70,784.92)	0.00	(70,784.92)	0.00	0.0
TOTAL, OTHER FINANCING SOURCES/USES (a - b + c - d + e)			(173,267.00)	(553,874.92)	(13,240.00)	(553,874.92)	0.00	0.0

2015-16 Second Interim
General Fund
Restricted (Resources 2000-9999)
Revenue, Expenditures, and Changes in Fund Balance

Description	Resource Codes	Object Codes	Original Budget (A)	Board Approved Operating Budget (B)	Actuals To Date (C)	Projected Year Totals (D)	Difference (Col B & D) (E)	% Diff (E/B) (F)
A. REVENUES								
1) LCFF Sources		8010-8099	64,609.00	66,767.00	27,377.00	66,767.00	0.00	0.0
2) Federal Revenue		8100-8299	358,185.00	415,665.29	13,065.39	415,665.29	0.00	0.0
3) Other State Revenue		8300-8599	34,111.00	62,696.00	35,899.00	62,696.00	0.00	0.0
4) Other Local Revenue		8600-8799	930,052.00	962,312.00	545,043.00	962,312.00	0.00	0.0
5) TOTAL REVENUES			1,384,957.00	1,507,440.29	621,384.39	1,507,440.29		
B. EXPENDITURES								
1) Certificated Salaries		1000-1999	157,377.00	185,047.00	83,846.78	185,047.00	0.00	0.0
2) Classified Salaries		2000-2999	98,016.00	87,210.00	42,628.36	87,210.00	0.00	0.0
3) Employee Benefits		3000-3999	81,750.00	76,640.31	37,659.18	76,640.31	0.00	0.0
4) Books and Supplies		4000-4999	19,958.00	38,962.99	6,456.32	38,962.99	0.00	0.0
5) Services and Other Operating Expenditures		5000-5999	1,199,538.00	1,236,342.08	239,271.47	1,236,342.08	0.00	0.0
6) Capital Outlay		6000-6999	0.00	0.00	0.00	0.00	0.00	0.0
7) Other Outgo (excluding Transfers of Indirect Costs)		7100-7299 7400-7499	0.00	0.00	0.00	0.00	0.00	0.0
8) Other Outgo - Transfers of Indirect Costs		7300-7399	467.00	2,990.00	0.00	2,990.00	0.00	0.0
9) TOTAL EXPENDITURES			1,557,106.00	1,627,192.38	409,862.11	1,627,192.38		
C. EXCESS (DEFICIENCY) OF REVENUES OVER EXPENDITURES BEFORE OTHER FINANCING SOURCES AND USES (A5 - B9)			(172,149.00)	(119,752.09)	211,522.28	(119,752.09)		
D. OTHER FINANCING SOURCES/USES								
1) Interfund Transfers								
a) Transfers In		8900-8929	0.00	0.00	0.00	0.00	0.00	0.0
b) Transfers Out		7600-7629	0.00	0.00	0.00	0.00	0.00	0.0
2) Other Sources/Uses								
a) Sources		8930-8979	0.00	0.00	0.00	0.00	0.00	0.0
b) Uses		7630-7699	0.00	0.00	0.00	0.00	0.00	0.0
3) Contributions		8980-8999	141,377.00	70,784.92	0.00	70,784.92	0.00	0.0
4) TOTAL OTHER FINANCING SOURCES/USES			141,377.00	70,784.92	0.00	70,784.92		

2015-16 Second Interim
General Fund
Restricted (Resources 2000-9999)
Revenue, Expenditures, and Changes in Fund Balance

Description	Resource Codes	Object Codes	Original Budget (A)	Board Approved Operating Budget (B)	Actuals To Date (C)	Projected Year Totals (D)	Difference (Col B & D) (E)	% Diff (E/B) (F)
E. NET INCREASE (DECREASE) IN FUND BALANCE (C + D4)			(30,772.00)	(48,967.17)	211,522.28	(48,967.17)		
F. FUND BALANCE, RESERVES								
1) Beginning Fund Balance								
a) As of July 1 - Unaudited		9791	159,319.17	159,319.17		159,319.17	0.00	0.0
b) Audit Adjustments		9793	0.00	0.00		0.00	0.00	0.0
c) As of July 1 - Audited (F1a + F1b)			159,319.17	159,319.17		159,319.17		
d) Other Restatements		9795	0.00	0.00		0.00	0.00	0.0
e) Adjusted Beginning Balance (F1c + F1d)			159,319.17	159,319.17		159,319.17		
2) Ending Balance, June 30 (E + F1e)			128,547.17	110,352.00		110,352.00		
Components of Ending Fund Balance								
a) Nonspendable								
Revolving Cash		9711	0.00	0.00		0.00		
Stores		9712	0.00	0.00		0.00		
Prepaid Expenditures		9713	0.00	0.00		0.00		
All Others		9719	0.00	0.00		0.00		
b) Restricted		9740	128,547.17	110,352.00		110,352.00		
c) Committed								
Stabilization Arrangements		9750	0.00	0.00		0.00		
Other Commitments		9760	0.00	0.00		0.00		
d) Assigned								
Other Assignments		9780	0.00	0.00		0.00		
e) Unassigned/Unappropriated								
Reserve for Economic Uncertainties		9789	0.00	0.00		0.00		
Unassigned/Unappropriated Amount		9790	0.00	0.00		0.00		

2015-16 Second Interim
General Fund
Restricted (Resources 2000-9999)
Revenue, Expenditures, and Changes in Fund Balance

Description	Resource Codes	Object Codes	Original Budget (A)	Board Approved Operating Budget (B)	Actuals To Date (C)	Projected Year Totals (D)	Difference (Col B & D) (E)	% Diff (E/B) (F)
LCFF SOURCES								
Principal Apportionment								
State Aid - Current Year		8011	0.00	0.00	0.00	0.00		
Education Protection Account State Aid - Current Year		8012	0.00	0.00	0.00	0.00		
State Aid - Prior Years		8019	0.00	0.00	0.00	0.00		
Tax Relief Subventions								
Homeowners' Exemptions		8021	0.00	0.00	0.00	0.00		
Timber Yield Tax		8022	0.00	0.00	0.00	0.00		
Other Subventions/in-Lieu Taxes		8029	0.00	0.00	0.00	0.00		
County & District Taxes								
Secured Roll Taxes		8041	0.00	0.00	0.00	0.00		
Unsecured Roll Taxes		8042	0.00	0.00	0.00	0.00		
Prior Years' Taxes		8043	0.00	0.00	0.00	0.00		
Supplemental Taxes		8044	0.00	0.00	0.00	0.00		
Education Revenue Augmentation Fund (ERAF)		8045	0.00	0.00	0.00	0.00		
Community Redevelopment Funds (SB 617/699/1992)		8047	0.00	0.00	0.00	0.00		
Penalties and Interest from Delinquent Taxes		8048	0.00	0.00	0.00	0.00		
Miscellaneous Funds (EC 41604)								
Royalties and Bonuses		8081	0.00	0.00	0.00	0.00		
Other In-Lieu Taxes		8082	0.00	0.00	0.00	0.00		
Less: Non-LCFF (50%) Adjustment		8089	0.00	0.00	0.00	0.00		
Subtotal, LCFF Sources			0.00	0.00	0.00	0.00		
LCFF Transfers								
Unrestricted LCFF Transfers - Current Year	0000	8091						
All Other LCFF Transfers - Current Year	All Other	8091	0.00	0.00	0.00	0.00	0.00	0.0%
Transfers to Charter Schools in Lieu of Property Taxes		8096	0.00	0.00	0.00	0.00		
Property Taxes Transfers		8097	64,609.00	66,767.00	27,377.00	66,767.00	0.00	0.0%
LCFF/Revenue Limit Transfers - Prior Years		8099	0.00	0.00	0.00	0.00	0.00	0.0%
TOTAL, LCFF SOURCES			64,609.00	66,767.00	27,377.00	66,767.00	0.00	0.0%
FEDERAL REVENUE								
Maintenance and Operations		8110	0.00	0.00	0.00	0.00	0.00	0.0%
Special Education Entitlement		8181	330,113.00	339,787.00	0.00	339,787.00	0.00	0.0%
Special Education Discretionary Grants		8182	0.00	0.00	0.00	0.00	0.00	0.0%
Child Nutrition Programs		8220	0.00	0.00	0.00	0.00	0.00	0.0%
Forest Reserve Funds		8260	0.00	0.00	0.00	0.00		
Flood Control Funds		8270	0.00	0.00	0.00	0.00		
Wildlife Reserve Funds		8280	0.00	0.00	0.00	0.00		
FEMA		8281	0.00	0.00	0.00	0.00	0.00	0.0%
Interagency Contracts Between LEAs		8285	0.00	0.00	0.00	0.00	0.00	0.0%
Pass-Through Revenues from Federal Sources		8287	0.00	0.00	0.00	0.00	0.00	0.0%
NCLB: Title I, Part A, Basic Grants Low-Income and Neglected	3010	8290	14,715.00	21,199.00	10,933.00	21,199.00	0.00	0.0%
NCLB: Title I, Part D, Local Delinquent Program	3025	8290	0.00	0.00	0.00	0.00	0.00	0.0%
NCLB: Title II, Part A, Teacher Quality	4035	8290	3,511.00	5,252.39	1,781.39	5,252.39	0.00	0.0%

2015-16 Second Interim
General Fund
Restricted (Resources 2000-9999)
Revenue, Expenditures, and Changes in Fund Balance

Description	Resource Codes	Object Codes	Original Budget (A)	Board Approved Operating Budget (B)	Actuals To Date (C)	Projected Year Totals (D)	Difference (Col B & D) (E)	% Diff (E/B) (F)
NCLB: Title III, Immigration Education Program	4201	8290	545.00	868.00	351.00	868.00	0.00	0.0
NCLB: Title III, Limited English Proficient (LEP) Student Program	4203	8290	2,613.00	0.00	0.00	0.00	0.00	0.0
NCLB: Title V, Part B, Public Charter Schools Grant Program (PCSGP)	4610	8290	0.00	0.00	0.00	0.00	0.00	0.0
Other No Child Left Behind	3011-3020, 3026-3199, 4036-4126, 5510	8290	0.00	43,247.90	0.00	43,247.90	0.00	0.0
Vocational and Applied Technology Education	3500-3699	8290	0.00	0.00	0.00	0.00	0.00	0.0
Safe and Drug Free Schools	3700-3799	8290	0.00	0.00	0.00	0.00	0.00	0.0
All Other Federal Revenue	All Other	8290	4,688.00	5,311.00	0.00	5,311.00	0.00	0.0
TOTAL, FEDERAL REVENUE			358,185.00	415,665.29	13,065.39	415,665.29	0.00	0.0
OTHER STATE REVENUE								
Other State Apportionments								
ROC/P Entitlement Prior Years	6360	8319	0.00	0.00	0.00	0.00	0.00	0.0
Special Education Master Plan Current Year	6500	8311	0.00	0.00	0.00	0.00	0.00	0.0
Prior Years	6500	8319	0.00	0.00	0.00	0.00	0.00	0.0
All Other State Apportionments - Current Year	All Other	8311	0.00	0.00	0.00	0.00	0.00	0.0
All Other State Apportionments - Prior Years	All Other	8319	0.00	0.00	0.00	0.00	0.00	0.0
Child Nutrition Programs		8520	0.00	0.00	0.00	0.00	0.00	0.0
Mandated Costs Reimbursements		8550	0.00	0.00	0.00	0.00	0.00	0.0
Lottery - Unrestricted and Instructional Materials		8560	6,111.00	7,421.00	0.00	7,421.00	0.00	0.0
Tax Relief Subventions								
Restricted Levies - Other								
Homeowners' Exemptions		8575	0.00	0.00	0.00	0.00	0.00	0.0
Other Subventions/In-Lieu Taxes		8576	0.00	0.00	0.00	0.00	0.00	0.0
Pass-Through Revenues from State Sources								
School Based Coordination Program	7250	8590	0.00	0.00	0.00	0.00	0.00	0.0
After School Education and Safety (ASES)	6010	8590	0.00	0.00	0.00	0.00	0.00	0.0
Charter School Facility Grant	6030	8590	0.00	0.00	0.00	0.00	0.00	0.0
Drug/Alcohol/Tobacco Funds	6650, 6690	8590	0.00	0.00	0.00	0.00	0.00	0.0
California Clean Energy Jobs Act	6230	8590	0.00	0.00	0.00	0.00	0.00	0.0
Specialized Secondary	7370	8590	0.00	0.00	0.00	0.00	0.00	0.0
American Indian Early Childhood Education	7210	8590	0.00	0.00	0.00	0.00	0.00	0.0
Quality Education Investment Act	7400	8590	0.00	0.00	0.00	0.00	0.00	0.0
Common Core State Standards Implementation	7405	8590	0.00	0.00	0.00	0.00	0.00	0.0
All Other State Revenue	All Other	8590	28,000.00	55,275.00	35,899.00	55,275.00	0.00	0.0
TOTAL, OTHER STATE REVENUE			34,111.00	62,696.00	35,899.00	62,696.00	0.00	0.0

2015-16 Second Interim
General Fund
Restricted (Resources 2000-9999)
Revenue, Expenditures, and Changes in Fund Balance

Description	Resource Codes	Object Codes	Original Budget (A)	Board Approved Operating Budget (B)	Actuals To Date (C)	Projected Year Totals (D)	Difference (Col B & D) (E)	% Diff (E/B) (F)
OTHER LOCAL REVENUE								
Other Local Revenue								
County and District Taxes								
Other Restricted Levies								
Secured Roll		8615	0.00	0.00	0.00	0.00	0.00	0.0%
Unsecured Roll		8616	0.00	0.00	0.00	0.00	0.00	0.0%
Prior Years' Taxes		8617	0.00	0.00	0.00	0.00	0.00	0.0%
Supplemental Taxes		8618	0.00	0.00	0.00	0.00	0.00	0.0%
Non-Ad Valorem Taxes								
Parcel Taxes		8621	0.00	0.00	0.00	0.00	0.00	0.0%
Other		8622	0.00	0.00	0.00	0.00	0.00	0.0%
Community Redevelopment Funds								
Not Subject to LCFF Deduction		8625	0.00	0.00	0.00	0.00	0.00	0.0%
Penalties and Interest from Delinquent Non-LCFF Taxes								
		8629	0.00	0.00	0.00	0.00	0.00	0.0%
Sales								
Sale of Equipment/Supplies								
		8631	0.00	0.00	0.00	0.00	0.00	0.0%
Sale of Publications								
		8632	0.00	0.00	0.00	0.00	0.00	0.0%
Food Service Sales								
		8634	0.00	0.00	0.00	0.00	0.00	0.0%
All Other Sales								
		8639	0.00	0.00	0.00	0.00	0.00	0.0%
Leases and Rentals								
		8650	0.00	0.00	0.00	0.00	0.00	0.0%
Interest								
		8660	0.00	0.00	0.00	0.00	0.00	0.0%
Net Increase (Decrease) in the Fair Value of Investments								
		8662	0.00	0.00	0.00	0.00	0.00	0.0%
Fees and Contracts								
Adult Education Fees								
		8671	0.00	0.00	0.00	0.00		
Non-Resident Students								
		8672	0.00	0.00	0.00	0.00		
Transportation Fees From Individuals								
		8675	0.00	0.00	0.00	0.00	0.00	0.0%
Interagency Services								
		8677	0.00	0.00	0.00	0.00	0.00	0.0%
Mitigation/Developer Fees								
		8681	0.00	0.00	0.00	0.00	0.00	0.0%
All Other Fees and Contracts								
		8689	0.00	0.00	0.00	0.00	0.00	0.0%
Other Local Revenue								
Plus: Misc Funds Non-LCFF (50%) Adjustme								
		8691	0.00	0.00	0.00	0.00		
Pass-Through Revenues From Local Sources								
		8697	0.00	0.00	0.00	0.00	0.00	0.0%
All Other Local Revenue								
		8699	0.00	0.00	0.00	0.00	0.00	0.0%
Tuition								
		8710	0.00	0.00	0.00	0.00	0.00	0.0%
All Other Transfers In								
		8781-8783	0.00	0.00	0.00	0.00	0.00	0.0%
Transfers Of Apportionments								
Special Education SELPA Transfers								
From Districts or Charter Schools								
	6500	8791	0.00	0.00	0.00	0.00	0.00	0.0%
From County Offices								
	6500	8792	930,052.00	962,312.00	545,043.00	962,312.00	0.00	0.0%
From JPAs								
	6500	8793	0.00	0.00	0.00	0.00	0.00	0.0%
ROC/P Transfers								
From Districts or Charter Schools								
	6360	8791	0.00	0.00	0.00	0.00	0.00	0.0%
From County Offices								
	6360	8792	0.00	0.00	0.00	0.00	0.00	0.0%
From JPAs								
	6360	8793	0.00	0.00	0.00	0.00	0.00	0.0%
Other Transfers of Apportionments								
From Districts or Charter Schools								
	All Other	8791	0.00	0.00	0.00	0.00	0.00	0.0%
From County Offices								
	All Other	8792	0.00	0.00	0.00	0.00	0.00	0.0%
From JPAs								
	All Other	8793	0.00	0.00	0.00	0.00	0.00	0.0%
All Other Transfers In from All Others								
		8799	0.00	0.00	0.00	0.00	0.00	0.0%
TOTAL, OTHER LOCAL REVENUE			930,052.00	962,312.00	545,043.00	962,312.00	0.00	0.0%
TOTAL, REVENUES			1,384,957.00	1,507,440.29	621,384.39	1,507,440.29	0.00	0.0%

Description	Resource Codes	Object Codes	Original Budget (A)	Board Approved Operating Budget (B)	Actuals To Date (C)	Projected Year Totals (D)	Difference (Col B & D) (E)	% Diff (E/B) (F)
CERTIFICATED SALARIES								
Certificated Teachers' Salaries		1100	94,877.00	136,252.00	63,423.21	136,252.00	0.00	0.0%
Certificated Pupil Support Salaries		1200	35,000.00	21,295.00	6,970.00	21,295.00	0.00	0.0%
Certificated Supervisors' and Administrators' Salaries		1300	27,500.00	27,500.00	13,453.57	27,500.00	0.00	0.0%
Other Certificated Salaries		1900	0.00	0.00	0.00	0.00	0.00	0.0%
TOTAL, CERTIFICATED SALARIES			157,377.00	185,047.00	83,846.78	185,047.00	0.00	0.0%
CLASSIFIED SALARIES								
Classified Instructional Salaries		2100	71,277.00	60,351.00	26,486.81	60,351.00	0.00	0.0%
Classified Support Salaries		2200	26,739.00	26,859.00	16,141.55	26,859.00	0.00	0.0%
Classified Supervisors' and Administrators' Salaries		2300	0.00	0.00	0.00	0.00	0.00	0.0%
Clerical, Technical and Office Salaries		2400	0.00	0.00	0.00	0.00	0.00	0.0%
Other Classified Salaries		2900	0.00	0.00	0.00	0.00	0.00	0.0%
TOTAL, CLASSIFIED SALARIES			98,016.00	87,210.00	42,628.36	87,210.00	0.00	0.0%
EMPLOYEE BENEFITS								
STRS		3101-3102	16,887.00	16,257.00	8,375.61	16,257.00	0.00	0.0%
PERS		3201-3202	10,335.00	8,070.00	3,769.67	8,070.00	0.00	0.0%
OASDI/Medicare/Alternative		3301-3302	9,833.00	10,038.00	4,580.80	10,038.00	0.00	0.0%
Health and Welfare Benefits		3401-3402	39,675.00	37,029.31	18,528.37	37,029.31	0.00	0.0%
Unemployment Insurance		3501-3502	129.00	132.00	63.26	132.00	0.00	0.0%
Workers' Compensation		3601-3602	4,891.00	5,114.00	2,341.47	5,114.00	0.00	0.0%
OPEB, Allocated		3701-3702	0.00	0.00	0.00	0.00	0.00	0.0%
OPEB, Active Employees		3751-3752	0.00	0.00	0.00	0.00	0.00	0.0%
Other Employee Benefits		3901-3902	0.00	0.00	0.00	0.00	0.00	0.0%
TOTAL, EMPLOYEE BENEFITS			81,750.00	76,640.31	37,659.18	76,640.31	0.00	0.0%
BOOKS AND SUPPLIES								
Approved Textbooks and Core Curricula Materials		4100	6,111.00	7,583.09	173.33	7,583.09	0.00	0.0%
Books and Other Reference Materials		4200	0.00	0.00	0.00	0.00	0.00	0.0%
Materials and Supplies		4300	13,847.00	31,379.90	6,282.99	31,379.90	0.00	0.0%
Noncapitalized Equipment		4400	0.00	0.00	0.00	0.00	0.00	0.0%
Food		4700	0.00	0.00	0.00	0.00	0.00	0.0%
TOTAL, BOOKS AND SUPPLIES			19,958.00	38,962.99	6,456.32	38,962.99	0.00	0.0%
SERVICES AND OTHER OPERATING EXPENDITURES								
Subagreements for Services		5100	0.00	0.00	0.00	0.00	0.00	0.0%
Travel and Conferences		5200	4,367.00	23,517.39	1,659.45	23,517.39	0.00	0.0%
Dues and Memberships		5300	0.00	0.00	0.00	0.00	0.00	0.0%
Insurance		5400-5450	0.00	0.00	0.00	0.00	0.00	0.0%
Operations and Housekeeping Services		5500	0.00	0.00	0.00	0.00	0.00	0.0%
Rentals, Leases, Repairs, and Noncapitalized Improvements		5600	1,191,906.00	1,167,415.00	221,658.25	1,167,415.00	0.00	0.0%
Transfers of Direct Costs		5710	0.00	0.00	0.00	0.00	0.00	0.0%
Transfers of Direct Costs - Interfund		5750	0.00	0.00	0.00	0.00	0.00	0.0%
Professional/Consulting Services and Operating Expenditures		5800	3,265.00	45,409.69	15,953.77	45,409.69	0.00	0.0%
Communications		5900	0.00	0.00	0.00	0.00	0.00	0.0%
TOTAL, SERVICES AND OTHER OPERATING EXPENDITURES			1,199,538.00	1,236,342.08	239,271.47	1,236,342.08	0.00	0.0%

2015-16 Second Interim
General Fund
Restricted (Resources 2000-9999)
Revenue, Expenditures, and Changes in Fund Balance

Description	Resource Codes	Object Codes	Original Budget (A)	Board Approved Operating Budget (B)	Actuals To Date (C)	Projected Year Totals (D)	Difference (Col B & D) (E)	% Diff (E/B) (F)
CAPITAL OUTLAY								
Land		6100	0.00	0.00	0.00	0.00	0.00	0.0
Land Improvements		6170	0.00	0.00	0.00	0.00	0.00	0.0
Buildings and Improvements of Buildings		6200	0.00	0.00	0.00	0.00	0.00	0.0
Books and Media for New School Libraries or Major Expansion of School Libraries		6300	0.00	0.00	0.00	0.00	0.00	0.0
Equipment		6400	0.00	0.00	0.00	0.00	0.00	0.0
Equipment Replacement		6500	0.00	0.00	0.00	0.00	0.00	0.0
TOTAL, CAPITAL OUTLAY			0.00	0.00	0.00	0.00	0.00	0.0
OTHER OUTGO (excluding Transfers of Indirect Costs)								
Tuition								
Tuition for Instruction Under Interdistrict Attendance Agreements		7110	0.00	0.00	0.00	0.00	0.00	0.0
State Special Schools		7130	0.00	0.00	0.00	0.00	0.00	0.0
Tuition, Excess Costs, and/or Deficit Payments								
Payments to Districts or Charter Schools		7141	0.00	0.00	0.00	0.00	0.00	0.0
Payments to County Offices		7142	0.00	0.00	0.00	0.00	0.00	0.0
Payments to JPAs		7143	0.00	0.00	0.00	0.00	0.00	0.0
Transfers of Pass-Through Revenues								
To Districts or Charter Schools		7211	0.00	0.00	0.00	0.00	0.00	0.0
To County Offices		7212	0.00	0.00	0.00	0.00	0.00	0.0
To JPAs		7213	0.00	0.00	0.00	0.00	0.00	0.0
Special Education SELPA Transfers of Apportionments								
To Districts or Charter Schools	6500	7221	0.00	0.00	0.00	0.00	0.00	0.0
To County Offices	6500	7222	0.00	0.00	0.00	0.00	0.00	0.0
To JPAs	6500	7223	0.00	0.00	0.00	0.00	0.00	0.0
ROC/P Transfers of Apportionments								
To Districts or Charter Schools	6360	7221	0.00	0.00	0.00	0.00	0.00	0.0
To County Offices	6360	7222	0.00	0.00	0.00	0.00	0.00	0.0
To JPAs	6360	7223	0.00	0.00	0.00	0.00	0.00	0.0
Other Transfers of Apportionments	All Other	7221-7223	0.00	0.00	0.00	0.00	0.00	0.0
All Other Transfers		7281-7283	0.00	0.00	0.00	0.00	0.00	0.0
All Other Transfers Out to All Others		7299	0.00	0.00	0.00	0.00	0.00	0.0
Debt Service								
Debt Service - Interest		7438	0.00	0.00	0.00	0.00	0.00	0.0
Other Debt Service - Principal		7439	0.00	0.00	0.00	0.00	0.00	0.0
TOTAL, OTHER OUTGO (excluding Transfers of Indirect Costs)			0.00	0.00	0.00	0.00	0.00	0.0
OTHER OUTGO - TRANSFERS OF INDIRECT COSTS								
Transfers of Indirect Costs		7310	467.00	2,990.00	0.00	2,990.00	0.00	0.0
Transfers of Indirect Costs - Interfund		7350	0.00	0.00	0.00	0.00	0.00	0.0
TOTAL, OTHER OUTGO - TRANSFERS OF INDIRECT COSTS			467.00	2,990.00	0.00	2,990.00	0.00	0.0
TOTAL, EXPENDITURES			1,557,106.00	1,627,192.38	409,862.11	1,627,192.38	0.00	0.0

2015-16 Second Interim
General Fund
Restricted (Resources 2000-9999)
Revenue, Expenditures, and Changes in Fund Balance

Description	Resource Codes	Object Codes	Original Budget (A)	Board Approved Operating Budget (B)	Actuals To Date (C)	Projected Year Totals (D)	Difference (Col B & D) (E)	% Diff (E/B) (F)
INTERFUND TRANSFERS								
INTERFUND TRANSFERS IN								
From: Special Reserve Fund		8912	0.00	0.00	0.00	0.00	0.00	0.0%
From: Bond Interest and Redemption Fund		8914	0.00	0.00	0.00	0.00		
Other Authorized Interfund Transfers In		8919	0.00	0.00	0.00	0.00	0.00	0.0%
(a) TOTAL, INTERFUND TRANSFERS IN			0.00	0.00	0.00	0.00	0.00	0.0%
INTERFUND TRANSFERS OUT								
To: Child Development Fund		7611	0.00	0.00	0.00	0.00	0.00	0.0%
To: Special Reserve Fund		7612	0.00	0.00	0.00	0.00	0.00	0.0%
To: State School Building Fund/ County School Facilities Fund		7613	0.00	0.00	0.00	0.00	0.00	0.0%
To: Cafeteria Fund		7616	0.00	0.00	0.00	0.00	0.00	0.0%
Other Authorized Interfund Transfers Out		7619	0.00	0.00	0.00	0.00	0.00	0.0%
(b) TOTAL, INTERFUND TRANSFERS OUT			0.00	0.00	0.00	0.00	0.00	0.0%
OTHER SOURCES/USES								
SOURCES								
State Apportionments Emergency Apportionments		8931	0.00	0.00	0.00	0.00		
Proceeds Proceeds from Sale/Lease-Purchase of Land/Buildings		8953	0.00	0.00	0.00	0.00	0.00	0.0%
Other Sources Transfers from Funds of Lapsed/Reorganized LEAs		8965	0.00	0.00	0.00	0.00	0.00	0.0%
Long-Term Debt Proceeds Proceeds from Certificates of Participation		8971	0.00	0.00	0.00	0.00	0.00	0.0%
Proceeds from Capital Leases		8972	0.00	0.00	0.00	0.00	0.00	0.0%
Proceeds from Lease Revenue Bonds		8973	0.00	0.00	0.00	0.00	0.00	0.0%
All Other Financing Sources		8979	0.00	0.00	0.00	0.00	0.00	0.0%
(c) TOTAL, SOURCES			0.00	0.00	0.00	0.00	0.00	0.0%
USES								
Transfers of Funds from Lapsed/Reorganized LEAs		7651	0.00	0.00	0.00	0.00	0.00	0.0%
All Other Financing Uses		7699	0.00	0.00	0.00	0.00	0.00	0.0%
(d) TOTAL, USES			0.00	0.00	0.00	0.00	0.00	0.0%
CONTRIBUTIONS								
Contributions from Unrestricted Revenues		8980	141,377.00	70,784.92	0.00	70,784.92	0.00	0.0%
Contributions from Restricted Revenues		8990	0.00	0.00	0.00	0.00	0.00	0.0%
(e) TOTAL, CONTRIBUTIONS			141,377.00	70,784.92	0.00	70,784.92	0.00	0.0%
TOTAL, OTHER FINANCING SOURCES/USES (a - b + c - d + e)			141,377.00	70,784.92	0.00	70,784.92	0.00	0.0%

2015-16 Second Interim
General Fund
Summary - Unrestricted/Restricted
Revenues, Expenditures, and Changes in Fund Balance

Description	Resource Codes	Object Codes	Original Budget (A)	Board Approved Operating Budget (B)	Actuals To Date (C)	Projected Year Totals (D)	Difference (Col B & D) (E)	% Diff (E/B) (F)
A. REVENUES								
1) LCFF Sources		8010-8099	1,462,087.00	1,461,391.00	1,190,809.65	1,461,391.00	0.00	0.00
2) Federal Revenue		8100-8299	395,306.00	459,413.29	18,471.63	459,413.29	0.00	0.00
3) Other State Revenue		8300-8599	160,544.00	184,008.00	124,186.54	184,008.00	0.00	0.00
4) Other Local Revenue		8600-8799	1,318,382.00	1,788,788.00	636,934.59	1,788,788.00	0.00	0.00
5) TOTAL, REVENUES			3,336,319.00	3,893,600.29	1,970,402.41	3,893,600.29		
B. EXPENDITURES								
1) Certificated Salaries		1000-1999	890,685.00	893,200.00	443,032.82	893,200.00	0.00	0.00
2) Classified Salaries		2000-2999	501,904.00	494,581.22	280,091.40	494,581.22	0.00	0.00
3) Employee Benefits		3000-3999	416,999.84	421,122.62	224,034.10	421,122.62	0.00	0.00
4) Books and Supplies		4000-4999	108,778.06	135,052.66	52,274.08	135,052.66	0.00	0.00
5) Services and Other Operating Expenditures		5000-5999	1,395,391.00	1,447,257.90	362,741.47	1,447,257.90	0.00	0.00
6) Capital Outlay		6000-6999	800.00	0.00	0.00	0.00	0.00	0.00
7) Other Outgo (excluding Transfers of Indirect Costs)		7100-7299						
		7400-7499	0.00	0.00	0.00	0.00	0.00	0.00
8) Other Outgo - Transfers of Indirect Costs		7300-7399	0.00	0.00	0.00	0.00	0.00	0.00
9) TOTAL, EXPENDITURES			3,314,557.90	3,391,214.40	1,362,173.87	3,391,214.40		
C. EXCESS (DEFICIENCY) OF REVENUES OVER EXPENDITURES BEFORE OTHER FINANCING SOURCES AND USES (A5 - B9)								
			21,761.10	502,385.89	608,228.54	502,385.89		
D. OTHER FINANCING SOURCES/USES								
1) Interfund Transfers								
a) Transfers In		8900-8929	31,200.00	0.00	0.00	0.00	0.00	0.00
b) Transfers Out		7600-7629	63,090.00	483,090.00	13,240.00	483,090.00	0.00	0.00
2) Other Sources/Uses								
a) Sources		8930-8979	0.00	0.00	0.00	0.00	0.00	0.00
b) Uses		7630-7699	0.00	0.00	0.00	0.00	0.00	0.00
3) Contributions		8980-8999	0.00	0.00	0.00	0.00	0.00	0.00
4) TOTAL, OTHER FINANCING SOURCES/USES			(31,890.00)	(483,090.00)	(13,240.00)	(483,090.00)		

2015-16 Second Interim
General Fund
Summary - Unrestricted/Restricted
Revenues, Expenditures, and Changes in Fund Balance

Description	Resource Codes	Object Codes	Original Budget (A)	Board Approved Operating Budget (B)	Actuals To Date (C)	Projected Year Totals (D)	Difference (Col B & D) (E)	% Diff (E/B) (F)
E. NET INCREASE (DECREASE) IN FUND BALANCE (C + D4)			(10,128.90)	19,295.89	594,988.54	19,295.89		
F. FUND BALANCE, RESERVES								
1) Beginning Fund Balance								
a) As of July 1 - Unaudited		9791	457,535.35	457,535.35		457,535.35	0.00	0.00
b) Audit Adjustments		9793	0.00	0.00		0.00	0.00	0.00
c) As of July 1 - Audited (F1a + F1b)			457,535.35	457,535.35		457,535.35		
d) Other Restatements		9795	0.00	0.00		0.00	0.00	0.00
e) Adjusted Beginning Balance (F1c + F1d)			457,535.35	457,535.35		457,535.35		
2) Ending Balance, June 30 (E + F1e)			447,406.45	476,831.24		476,831.24		
Components of Ending Fund Balance								
a) Nonspendable								
Revolving Cash		9711	6,000.00	6,000.00		6,000.00		
Stores		9712	0.00	0.00		0.00		
Prepaid Expenditures		9713	0.00	0.00		0.00		
All Others		9719	0.00	0.00		0.00		
b) Restricted		9740	128,547.17	110,352.00		110,352.00		
c) Committed								
Stabilization Arrangements		9750	0.00	0.00		0.00		
Other Commitments		9750	0.00	0.00		0.00		
d) Assigned								
Other Assignments		9780	37,225.26	57,930.02		57,930.02		
e) Unassigned/Unappropriated								
Reserve for Economic Uncertainties		9789	275,634.02	302,549.22		302,549.22		
Unassigned/Unappropriated Amount		9790	0.00	0.00		0.00		

2015-16 Second Interim
General Fund
Summary - Unrestricted/Restricted
Revenues, Expenditures, and Changes in Fund Balance

Description	Resource Codes	Object Codes	Original Budget (A)	Board Approved Operating Budget (B)	Actuals To Date (C)	Projected Year Totals (D)	Difference (Col B & D) (E)	% Diff (E/B) (F)
LCFF SOURCES								
Principal Apportionment								
State Aid - Current Year		8011	1,152,225.00	1,140,374.00	747,509.00	1,140,374.00	0.00	0.0%
Education Protection Account State Aid - Current Year		8012	204,445.00	221,791.00	117,405.00	221,791.00	0.00	0.0%
State Aid - Prior Years		8019	0.00	0.00	2,766.00	0.00	0.00	0.0%
Tax Relief Subventions								
Homeowners' Exemptions		8021	4,791.00	4,725.00	2,338.08	4,725.00	0.00	0.0%
Timber Yield Tax		8022	0.00	0.00	0.00	0.00	0.00	0.0%
Other Subventions/In-Lieu Taxes		8029	0.00	0.00	0.00	0.00	0.00	0.0%
County & District Taxes								
Secured Roll Taxes		8041	544,985.00	576,326.00	304,276.15	576,326.00	0.00	0.0%
Unsecured Roll Taxes		8042	19,001.00	19,340.00	19,009.50	19,340.00	0.00	0.0%
Prior Years' Taxes		8043	(709.00)	(286.00)	(57.19)	(286.00)	0.00	0.0%
Supplemental Taxes		8044	183,324.00	206,463.00	89,965.44	206,463.00	0.00	0.0%
Education Revenue Augmentation Fund (ERAF)		8045	(58,970.00)	(22,739.00)	0.00	(22,739.00)	0.00	0.0%
Community Redevelopment Funds (SB 617/699/1992)		8047	0.00	0.00	0.00	0.00	0.00	0.0%
Penalties and Interest from Delinquent Taxes		8048	0.00	0.00	0.00	0.00	0.00	0.0%
Miscellaneous Funds (EC 41604)								
Royalties and Bonuses		8081	0.00	0.00	0.00	0.00	0.00	0.0%
Other In-Lieu Taxes		8082	0.00	0.00	0.00	0.00	0.00	0.0%
Less: Non-LCFF (50%) Adjustment		8089	0.00	0.00	0.00	0.00	0.00	0.0%
Subtotal, LCFF Sources			2,049,092.00	2,145,994.00	1,283,211.98	2,145,994.00	0.00	0.0%
LCFF Transfers								
Unrestricted LCFF Transfers - Current Year	0000	8091	0.00	0.00	0.00	0.00	0.00	0.0%
All Other LCFF Transfers - Current Year	All Other	8091	0.00	0.00	0.00	0.00	0.00	0.0%
Transfers to Charter Schools in Lieu of Property Taxes		8096	(651,614.00)	(751,370.00)	(119,779.33)	(751,370.00)	0.00	0.0%
Property Taxes Transfers		8097	64,609.00	66,767.00	27,377.00	66,767.00	0.00	0.0%
LCFF/Revenue Limit Transfers - Prior Years		8099	0.00	0.00	0.00	0.00	0.00	0.0%
TOTAL, LCFF SOURCES			1,462,087.00	1,461,391.00	1,190,809.65	1,461,391.00	0.00	0.0%
FEDERAL REVENUE								
Maintenance and Operations		8110	38,341.00	42,739.00	4,397.44	42,739.00	0.00	0.0%
Special Education Entitlement		8181	330,113.00	339,787.00	0.00	339,787.00	0.00	0.0%
Special Education Discretionary Grants		8182	0.00	0.00	0.00	0.00	0.00	0.0%
Child Nutrition Programs		8220	0.00	0.00	0.00	0.00	0.00	0.0%
Forest Reserve Funds		8260	0.00	0.00	0.00	0.00	0.00	0.0%
Flood Control Funds		8270	0.00	0.00	0.00	0.00	0.00	0.0%
Wildlife Reserve Funds		8280	780.00	1,009.00	1,008.80	1,009.00	0.00	0.0%
FEMA		8281	0.00	0.00	0.00	0.00	0.00	0.0%
Interagency Contracts Between LEAs		8285	0.00	0.00	0.00	0.00	0.00	0.0%
Pass-Through Revenues from Federal Sources		8287	0.00	0.00	0.00	0.00	0.00	0.0%
NCLB: Title I, Part A, Basic Grants Low-Income and Neglected	3010	8290	14,715.00	21,199.00	10,933.00	21,199.00	0.00	0.0%
NCLB: Title I, Part D, Local Delinquent Program	3025	8290	0.00	0.00	0.00	0.00	0.00	0.0%
NCLB: Title II, Part A, Teacher Quality	4035	8290	3,511.00	5,252.39	1,781.39	5,252.39	0.00	0.0%

2015-16 Second Interim
General Fund
Summary - Unrestricted/Restricted
Revenues, Expenditures, and Changes in Fund Balance

Description	Resource Codes	Object Codes	Original Budget (A)	Board Approved Operating Budget (B)	Actuals To Date (C)	Projected Year Totals (D)	Difference (Col B & D) (E)	% Diff (E/B) (F)
NCLB: Title III, Immigration Education Program	4201	8290	545.00	868.00	351.00	868.00	0.00	0.0
NCLB: Title III, Limited English Proficient (LEP) Student Program	4203	8290	2,613.00	0.00	0.00	0.00	0.00	0.0
NCLB: Title V, Part B, Public Charter Schools Grant Program (PCSGP)	4610	8290	0.00	0.00	0.00	0.00	0.00	0.0
	3011-3020, 3026-3199, 4036-4126, 5510	8290						
Other No Child Left Behind		8290	0.00	43,247.90	0.00	43,247.90	0.00	0.0
Vocational and Applied Technology Education	3500-3699	8290	0.00	0.00	0.00	0.00	0.00	0.0
Safe and Drug Free Schools	3700-3799	8290	0.00	0.00	0.00	0.00	0.00	0.0
All Other Federal Revenue	All Other	8290	4,688.00	5,311.00	0.00	5,311.00	0.00	0.0
TOTAL, FEDERAL REVENUE			395,306.00	459,413.29	18,471.63	459,413.29	0.00	0.0
OTHER STATE REVENUE								
Other State Apportionments								
ROC/P Entitlement								
Prior Years	6360	8319	0.00	0.00	0.00	0.00	0.00	0.0
Special Education Master Plan								
Current Year	6500	8311	0.00	0.00	0.00	0.00	0.00	0.0
Prior Years	6500	8319	0.00	0.00	0.00	0.00	0.00	0.0
All Other State Apportionments - Current Year	All Other	8311	0.00	0.00	0.00	0.00	0.00	0.0
All Other State Apportionments - Prior Years	All Other	8319	0.00	0.00	0.00	0.00	0.00	0.0
Child Nutrition Programs		8520	0.00	0.00	0.00	0.00	0.00	0.0
Mandated Costs Reimbursements		8550	103,426.00	95,972.00	82,828.00	95,972.00	0.00	0.0
Lottery - Unrestricted and Instructional Materie		8560	29,118.00	32,761.00	5,459.54	32,761.00	0.00	0.0
Tax Relief Subventions								
Restricted Levies - Other								
Homeowners' Exemptions		8575	0.00	0.00	0.00	0.00	0.00	0.0
Other Subventions/In-Lieu Taxes		8576	0.00	0.00	0.00	0.00	0.00	0.0
Pass-Through Revenues from State Sources		8587	0.00	0.00	0.00	0.00	0.00	0.0
School Based Coordination Program	7250	8590	0.00	0.00	0.00	0.00	0.00	0.0
After School Education and Safety (ASES)	6010	8590	0.00	0.00	0.00	0.00	0.00	0.0
Charter School Facility Grant	6030	8590	0.00	0.00	0.00	0.00	0.00	0.0
Drug/Alcohol/Tobacco Funds	6650, 6690	8590	0.00	0.00	0.00	0.00	0.00	0.0
California Clean Energy Jobs Act	6230	8590	0.00	0.00	0.00	0.00	0.00	0.0
Specialized Secondary	7370	8590	0.00	0.00	0.00	0.00	0.00	0.0
American Indian Early Childhood Education	7210	8590	0.00	0.00	0.00	0.00	0.00	0.0
Quality Education Investment Act	7400	8590	0.00	0.00	0.00	0.00	0.00	0.0
Common Core State Standards Implementation	7405	8590	0.00	0.00	0.00	0.00	0.00	0.0
All Other State Revenue	All Other	8590	28,000.00	55,275.00	35,899.00	55,275.00	0.00	0.0
TOTAL, OTHER STATE REVENUE			160,544.00	184,008.00	124,186.54	184,008.00	0.00	0.0

2015-16 Second Interim
General Fund
Summary - Unrestricted/Restricted
Revenues, Expenditures, and Changes in Fund Balance

Description	Resource Codes	Object Codes	Original Budget (A)	Board Approved Operating Budget (B)	Actuals To Date (C)	Projected Year Totals (D)	Difference (Col B & D) (E)	% Diff (E/B) (F)
OTHER LOCAL REVENUE								
Other Local Revenue								
County and District Taxes								
Other Restricted Levies								
Secured Roll		8615	0.00	0.00	0.00	0.00	0.00	0.00
Unsecured Roll		8616	0.00	0.00	0.00	0.00	0.00	0.00
Prior Years' Taxes		8617	0.00	0.00	0.00	0.00	0.00	0.00
Supplemental Taxes		8618	0.00	0.00	0.00	0.00	0.00	0.00
Non-Ad Valorem Taxes								
Parcel Taxes		8621	0.00	0.00	0.00	0.00	0.00	0.00
Other		8622	0.00	0.00	0.00	0.00	0.00	0.00
Community Redevelopment Funds Not Subject to LCFF Deduction								
		8625	0.00	0.00	0.00	0.00	0.00	0.00
Penalties and Interest from Delinquent Non-LCFF Taxes								
		8629	0.00	0.00	0.00	0.00	0.00	0.00
Sales								
Sale of Equipment/Supplies		8631	0.00	0.00	0.00	0.00	0.00	0.00
Sale of Publications		8632	0.00	0.00	0.00	0.00	0.00	0.00
Food Service Sales		8634	0.00	0.00	0.00	0.00	0.00	0.00
All Other Sales		8639	0.00	0.00	0.00	0.00	0.00	0.00
Leases and Rentals		8650	0.00	0.00	0.00	0.00	0.00	0.00
Interest		8660	2,500.00	2,204.00	1,394.16	2,204.00	0.00	0.00
Net Increase (Decrease) in the Fair Value of Investments		8662	0.00	0.00	0.00	0.00	0.00	0.00
Fees and Contracts								
Adult Education Fees		8671	0.00	0.00	0.00	0.00	0.00	0.00
Non-Resident Students		8672	0.00	0.00	0.00	0.00	0.00	0.00
Transportation Fees From Individuals		8675	0.00	0.00	0.00	0.00	0.00	0.00
Interagency Services		8677	373,830.00	783,144.00	57,698.98	783,144.00	0.00	0.00
Mitigation/Developer Fees		8681	0.00	0.00	0.00	0.00	0.00	0.00
All Other Fees and Contracts		8689	0.00	0.00	0.00	0.00	0.00	0.00
Other Local Revenue								
Plus: Misc Funds Non-LCFF (50%) Adjustment		8691	0.00	0.00	0.00	0.00	0.00	0.00
Pass-Through Revenues From Local Sources		8697	0.00	0.00	0.00	0.00	0.00	0.00
All Other Local Revenue		8699	12,000.00	41,128.00	32,798.45	41,128.00	0.00	0.00
Tuition		8710	0.00	0.00	0.00	0.00	0.00	0.00
All Other Transfers In		8781-8783	0.00	0.00	0.00	0.00	0.00	0.00
Transfers Of Apportionments								
Special Education SELPA Transfers								
From Districts or Charter Schools	6500	8791	0.00	0.00	0.00	0.00	0.00	0.00
From County Offices	6500	8792	930,052.00	962,312.00	545,043.00	962,312.00	0.00	0.00
From JPAs	6500	8793	0.00	0.00	0.00	0.00	0.00	0.00
ROC/P Transfers								
From Districts or Charter Schools	6360	8791	0.00	0.00	0.00	0.00	0.00	0.00
From County Offices	6360	8792	0.00	0.00	0.00	0.00	0.00	0.00
From JPAs	6360	8793	0.00	0.00	0.00	0.00	0.00	0.00
Other Transfers of Apportionments								
From Districts or Charter Schools	All Other	8791	0.00	0.00	0.00	0.00	0.00	0.00
From County Offices	All Other	8792	0.00	0.00	0.00	0.00	0.00	0.00
From JPAs	All Other	8793	0.00	0.00	0.00	0.00	0.00	0.00
All Other Transfers In from All Others		8799	0.00	0.00	0.00	0.00	0.00	0.00
TOTAL, OTHER LOCAL REVENUE			1,318,382.00	1,788,788.00	636,934.59	1,788,788.00	0.00	0.00%
TOTAL REVENUES			3,336,319.00	3,893,600.29	1,970,402.41	3,893,600.29	0.00	0.00%

2015-16 Second Interim
General Fund
Summary - Unrestricted/Restricted
Revenues, Expenditures, and Changes in Fund Balance

Description	Resource Codes	Object Codes	Original Budget (A)	Board Approved Operating Budget (B)	Actuals To Date (C)	Projected Year Totals (D)	Difference (Col B & D) (E)	% Diff (E/B) (F)
CERTIFICATED SALARIES								
Certificated Teachers' Salaries		1100	665,685.00	679,626.00	336,745.75	679,626.00	0.00	0.0%
Certificated Pupil Support Salaries		1200	35,000.00	22,120.00	7,382.50	22,120.00	0.00	0.0%
Certificated Supervisors' and Administrators' Salaries		1300	190,000.00	191,454.00	98,904.57	191,454.00	0.00	0.0%
Other Certificated Salaries		1900	0.00	0.00	0.00	0.00	0.00	0.0%
TOTAL, CERTIFICATED SALARIES			890,685.00	893,200.00	443,032.82	893,200.00	0.00	0.0%
CLASSIFIED SALARIES								
Classified Instructional Salaries		2100	106,784.00	97,253.57	50,872.79	97,253.57	0.00	0.0%
Classified Support Salaries		2200	193,218.00	199,877.15	112,505.94	199,877.15	0.00	0.0%
Classified Supervisors' and Administrators' Salaries		2300	114,702.00	110,046.50	65,008.19	110,046.50	0.00	0.0%
Clerical, Technical and Office Salaries		2400	80,000.00	80,204.00	47,504.48	80,204.00	0.00	0.0%
Other Classified Salaries		2900	7,200.00	7,200.00	4,200.00	7,200.00	0.00	0.0%
TOTAL, CLASSIFIED SALARIES			501,904.00	494,581.22	280,091.40	494,581.22	0.00	0.0%
EMPLOYEE BENEFITS								
STRS		3101-3102	95,573.00	94,185.24	49,648.98	94,185.24	0.00	0.0%
PERS		3201-3202	51,513.00	51,233.00	25,781.50	51,233.00	0.00	0.0%
OASDI/Medicare/Alternative		3301-3302	50,648.00	51,142.00	27,429.02	51,142.00	0.00	0.0%
Health and Welfare Benefits		3401-3402	160,465.84	164,635.38	84,708.41	164,635.38	0.00	0.0%
Unemployment Insurance		3501-3502	697.00	695.00	359.52	695.00	0.00	0.0%
Workers' Compensation		3601-3602	30,602.00	29,354.00	15,625.09	29,354.00	0.00	0.0%
OPEB, Allocated		3701-3702	27,501.00	29,351.00	19,955.32	29,351.00	0.00	0.0%
OPEB, Active Employees		3751-3752	0.00	0.00	0.00	0.00	0.00	0.0%
Other Employee Benefits		3901-3902	0.00	527.00	526.26	527.00	0.00	0.0%
TOTAL, EMPLOYEE BENEFITS			416,999.84	421,122.62	224,034.10	421,122.62	0.00	0.0%
BOOKS AND SUPPLIES								
Approved Textbooks and Core Curricula Materials		4100	8,611.00	8,239.09	828.99	8,239.09	0.00	0.0%
Books and Other Reference Materials		4200	1,770.06	0.00	0.00	0.00	0.00	0.0%
Materials and Supplies		4300	96,397.00	115,653.57	47,272.48	115,653.57	0.00	0.0%
Noncapitalized Equipment		4400	2,000.00	11,160.00	4,172.61	11,160.00	0.00	0.0%
Food		4700	0.00	0.00	0.00	0.00	0.00	0.0%
TOTAL, BOOKS AND SUPPLIES			108,778.06	135,052.66	52,274.08	135,052.66	0.00	0.0%
SERVICES AND OTHER OPERATING EXPENDITURES								
Subagreements for Services		5100	0.00	0.00	0.00	0.00	0.00	0.0%
Travel and Conferences		5200	22,167.00	35,468.39	3,577.33	35,468.39	0.00	0.0%
Dues and Memberships		5300	2,100.00	5,841.00	5,180.86	5,841.00	0.00	0.0%
Insurance		5400-5450	10,000.00	11,567.00	11,167.10	11,567.00	0.00	0.0%
Operations and Housekeeping Services		5500	65,990.00	79,725.88	33,952.49	79,725.88	0.00	0.0%
Rentals, Leases, Repairs, and Noncapitalized Improvements		5600	1,220,349.00	1,200,623.00	238,274.44	1,200,623.00	0.00	0.0%
Transfers of Direct Costs		5710	0.00	0.00	0.00	0.00	0.00	0.0%
Transfers of Direct Costs - Interfund		5750	0.00	0.00	0.00	0.00	0.00	0.0%
Professional/Consulting Services and Operating Expenditures		5800	62,335.00	111,846.63	70,038.24	111,846.63	0.00	0.0%
Communications		5900	12,450.00	2,186.00	551.01	2,186.00	0.00	0.0%
TOTAL, SERVICES AND OTHER OPERATING EXPENDITURES			1,395,391.00	1,447,257.90	362,741.47	1,447,257.90	0.00	0.0%

2015-16 Second Interim
General Fund
Summary - Unrestricted/Restricted
Revenues, Expenditures, and Changes In Fund Balance

Description	Resource Codes	Object Codes	Original Budget (A)	Board Approved Operating Budget (B)	Actuals To Date (C)	Projected Year Totals (D)	Difference (Col B & D) (E)	% Diff (E/B) (F)
CAPITAL OUTLAY								
Land		6100	0.00	0.00	0.00	0.00	0.00	0.00
Land Improvements		6170	0.00	0.00	0.00	0.00	0.00	0.00
Buildings and Improvements of Buildings		6200	0.00	0.00	0.00	0.00	0.00	0.00
Books and Media for New School Libraries or Major Expansion of School Libraries		6300	0.00	0.00	0.00	0.00	0.00	0.00
Equipment		6400	800.00	0.00	0.00	0.00	0.00	0.00
Equipment Replacement		6500	0.00	0.00	0.00	0.00	0.00	0.00
TOTAL, CAPITAL OUTLAY			800.00	0.00	0.00	0.00	0.00	0.00
OTHER OUTGO (excluding Transfers of Indirect Costs)								
Tuition								
Tuition for Instruction Under Interdistrict Attendance Agreements		7110	0.00	0.00	0.00	0.00	0.00	0.00
State Special Schools		7130	0.00	0.00	0.00	0.00	0.00	0.00
Tuition, Excess Costs, and/or Deficit Payments Payments to Districts or Charter Schools		7141	0.00	0.00	0.00	0.00	0.00	0.00
Payments to County Offices		7142	0.00	0.00	0.00	0.00	0.00	0.00
Payments to JPAs		7143	0.00	0.00	0.00	0.00	0.00	0.00
Transfers of Pass-Through Revenues								
To Districts or Charter Schools		7211	0.00	0.00	0.00	0.00	0.00	0.00
To County Offices		7212	0.00	0.00	0.00	0.00	0.00	0.00
To JPAs		7213	0.00	0.00	0.00	0.00	0.00	0.00
Special Education SELPA Transfers of Apportionments								
To Districts or Charter Schools	6500	7221	0.00	0.00	0.00	0.00	0.00	0.00
To County Offices	6500	7222	0.00	0.00	0.00	0.00	0.00	0.00
To JPAs	6500	7223	0.00	0.00	0.00	0.00	0.00	0.00
ROC/P Transfers of Apportionments								
To Districts or Charter Schools	6360	7221	0.00	0.00	0.00	0.00	0.00	0.00
To County Offices	6360	7222	0.00	0.00	0.00	0.00	0.00	0.00
To JPAs	6360	7223	0.00	0.00	0.00	0.00	0.00	0.00
Other Transfers of Apportionments								
All Other Transfers	All Other	7221-7223	0.00	0.00	0.00	0.00	0.00	0.00
All Other Transfers Out to All Others		7281-7283	0.00	0.00	0.00	0.00	0.00	0.00
All Other Transfers Out to All Others		7299	0.00	0.00	0.00	0.00	0.00	0.00
Debt Service								
Debt Service - Interest		7438	0.00	0.00	0.00	0.00	0.00	0.00
Other Debt Service - Principal		7439	0.00	0.00	0.00	0.00	0.00	0.00
TOTAL, OTHER OUTGO (excluding Transfers of Indirect Costs)			0.00	0.00	0.00	0.00	0.00	0.00
OTHER OUTGO - TRANSFERS OF INDIRECT COSTS								
Transfers of Indirect Costs		7310	0.00	0.00	0.00	0.00	0.00	0.00
Transfers of Indirect Costs - Interfund		7350	0.00	0.00	0.00	0.00	0.00	0.00
TOTAL, OTHER OUTGO - TRANSFERS OF INDIRECT COSTS			0.00	0.00	0.00	0.00	0.00	0.00
TOTAL, EXPENDITURES			3,314,557.90	3,391,214.40	1,362,173.87	3,391,214.40	0.00	0.00%

2015-16 Second Interim
General Fund
Summary - Unrestricted/Restricted
Revenues, Expenditures, and Changes in Fund Balance

Description	Resource Codes	Object Codes	Original Budget (A)	Board Approved Operating Budget (B)	Actuals To Date (C)	Projected Year Totals (D)	Difference (Col B & D) (E)	% Diff (E/B) (F)
INTERFUND TRANSFERS								
INTERFUND TRANSFERS IN								
From: Special Reserve Fund		8912	31,200.00	0.00	0.00	0.00	0.00	0.00
From: Bond Interest and Redemption Fund		8914	0.00	0.00	0.00	0.00	0.00	0.00
Other Authorized Interfund Transfers In		8919	0.00	0.00	0.00	0.00	0.00	0.00
(a) TOTAL, INTERFUND TRANSFERS IN			31,200.00	0.00	0.00	0.00	0.00	0.00
INTERFUND TRANSFERS OUT								
To: Child Development Fund		7611	0.00	0.00	0.00	0.00	0.00	0.00
To: Special Reserve Fund		7612	0.00	0.00	0.00	0.00	0.00	0.00
To: State School Building Fund/ County School Facilities Fund		7613	0.00	0.00	0.00	0.00	0.00	0.00
To: Cafeteria Fund		7616	0.00	0.00	0.00	0.00	0.00	0.00
Other Authorized Interfund Transfers Out		7619	63,090.00	483,090.00	13,240.00	483,090.00	0.00	0.00
(b) TOTAL, INTERFUND TRANSFERS OUT			63,090.00	483,090.00	13,240.00	483,090.00	0.00	0.00
OTHER SOURCES/USES								
SOURCES								
State Apportionments Emergency Apportionments		8931	0.00	0.00	0.00	0.00	0.00	0.00
Proceeds Proceeds from Sale/Lease-Purchase of Land/Buildings		8953	0.00	0.00	0.00	0.00	0.00	0.00
Other Sources Transfers from Funds of Lapsed/Reorganized LEAs		8965	0.00	0.00	0.00	0.00	0.00	0.00
Long-Term Debt Proceeds Proceeds from Certificates of Participation		8971	0.00	0.00	0.00	0.00	0.00	0.00
Proceeds from Capital Leases		8972	0.00	0.00	0.00	0.00	0.00	0.00
Proceeds from Lease Revenue Bonds		8973	0.00	0.00	0.00	0.00	0.00	0.00
All Other Financing Sources		8979	0.00	0.00	0.00	0.00	0.00	0.00
(c) TOTAL, SOURCES			0.00	0.00	0.00	0.00	0.00	0.00
USES								
Transfers of Funds from Lapsed/Reorganized LEAs		7651	0.00	0.00	0.00	0.00	0.00	0.00
All Other Financing Uses		7699	0.00	0.00	0.00	0.00	0.00	0.00
(d) TOTAL, USES			0.00	0.00	0.00	0.00	0.00	0.00
CONTRIBUTIONS								
Contributions from Unrestricted Revenues		8980	0.00	0.00	0.00	0.00		
Contributions from Restricted Revenues		8990	0.00	0.00	0.00	0.00		
(e) TOTAL, CONTRIBUTIONS			0.00	0.00	0.00	0.00	0.00	0.00
TOTAL, OTHER FINANCING SOURCES/USES (a - b + c - d + e)			(31,890.00)	(483,090.00)	(13,240.00)	(483,090.00)	0.00	0.00

<u>Resource</u>	<u>Description</u>	<u>2015-16 Projected Year Totals</u>
4510	Indian Education	0.40
6230	California Clean Energy Jobs Act	50,428.00
6512	Special Ed: Mental Health Services	51,680.36
9010	Other Restricted Local	8,243.24
Total, Restricted Balance		<u>110,352.00</u>

Description	ESTIMATED FUNDED ADA Original Budget (A)	ESTIMATED FUNDED ADA Board Approved Operating Budget (B)	ESTIMATED P-2 REPORT ADA Projected Year Totals (C)	ESTIMATED FUNDED ADA Projected Year Totals (D)	DIFFERENCE (Col. D - B) (E)	PERCENTAGE DIFFERENCE (Col. E / B) (F)
A. DISTRICT						
1. Total District Regular ADA Includes Opportunity Classes, Home & Hospital, Special Day Class, Continuation Education, Special Education NPS/LCI and Extended Year, and Community Day School (includes Necessary Small School ADA)	172.09	171.22	171.22	171.22	0.00	0%
2. Total Basic Aid Choice/Court Ordered Voluntary Pupil Transfer Regular ADA Includes Opportunity Classes, Home & Hospital, Special Day Class, Continuation Education, Special Education NPS/LCI and Extended Year, and Community Day School (ADA not included in Line A1 above)	0.00	0.00	0.00	0.00	0.00	0%
3. Total Basic Aid Open Enrollment Regular ADA Includes Opportunity Classes, Home & Hospital, Special Day Class, Continuation Education, Special Education NPS/LCI and Extended Year, and Community Day School (ADA not included in Line A1 above)	0.00	0.00	0.00	0.00	0.00	0%
4. Total, District Regular ADA (Sum of Lines A1 through A3)	172.09	171.22	171.22	171.22	0.00	0%
5. District Funded County Program ADA						
a. County Community Schools per EC 1981(a)(b)&(d)	0.00	0.00	0.00	0.00	0.00	0%
b. Special Education-Special Day Class	0.00	0.00	0.00	0.00	0.00	0%
c. Special Education-NPS/LCI	0.00	0.00	0.00	0.00	0.00	0%
d. Special Education Extended Year	0.00	0.00	0.00	0.00	0.00	0%
e. Other County Operated Programs: Opportunity Schools and Full Day Opportunity Classes, Specialized Secondary Schools, Technical, Agricultural, and Natural Resource Conservation Schools	0.00	0.00	0.00	0.00	0.00	0%
f. County School Tuition Fund (Out of State Tuition) [EC 2000 and 46380]	0.00	0.00	0.00	0.00	0.00	0%
g. Total, District Funded County Program ADA (Sum of Lines A5a through A5f)	0.00	0.00	0.00	0.00	0.00	0%
6. TOTAL DISTRICT ADA (Sum of Line A4 and Line A5g)	172.09	171.22	171.22	171.22	0.00	0%
7. Adults in Correctional Facilities	0.00	0.00	0.00	0.00	0.00	0%
8. Charter School ADA (Enter Charter School ADA using Tab C. Charter School ADA)						

Description	Object Codes	Projected Year Totals (Form 011) (A)	% Change (Cols. C-A/A) (B)	2016-17 Projection (C)	% Change (Cols. E-C/C) (D)	2017-18 Projection (E)
(Enter projections for subsequent years 1 and 2 in Columns C and E; current year - Column A - is extracted)						
A. REVENUES AND OTHER FINANCING SOURCES						
1. LCFF/Revenue Limit Sources	8010-8099	1,461,391.00	3.69%	1,515,377.00	3.65%	1,570,671.00
2. Federal Revenues	8100-8299	459,413.29	0.47%	461,572.62	2.13%	471,404.00
3. Other State Revenues	8300-8599	184,008.00	0.47%	184,872.67	2.13%	188,810.00
4. Other Local Revenues	8600-8799	1,788,788.00	0.25%	1,793,310.00	1.15%	1,813,905.00
5. Other Financing Sources						
a. Transfers In	8900-8929	0.00	0.00%	0.00	0.00%	0.00
b. Other Sources	8930-8979	0.00	0.00%	0.00	0.00%	0.00
c. Contributions	8980-8999	0.00	0.00%	0.00	0.00%	(1.00)
6. Total (Sum lines A1 thru A5c)		3,893,600.29	1.58%	3,955,132.29	2.27%	4,044,789.00
B. EXPENDITURES AND OTHER FINANCING USES						
1. Certificated Salaries						
a. Base Salaries				893,200.00		911,064.00
b. Step & Column Adjustment				17,864.00		18,221.00
c. Cost-of-Living Adjustment				0.00		0.00
d. Other Adjustments				0.00		0.00
e. Total Certificated Salaries (Sum lines B1a thru B1d)	1000-1999	893,200.00	2.00%	911,064.00	2.00%	929,285.00
2. Classified Salaries						
a. Base Salaries				494,581.22		502,001.22
b. Step & Column Adjustment				7,420.00		7,528.00
c. Cost-of-Living Adjustment				0.00		0.00
d. Other Adjustments				0.00		0.00
e. Total Classified Salaries (Sum lines B2a thru B2d)	2000-2999	494,581.22	1.50%	502,001.22	1.50%	509,529.22
3. Employee Benefits	3000-3999	421,122.62	9.77%	462,271.00	11.62%	515,983.00
4. Books and Supplies	4000-4999	135,052.66	2.22%	138,048.00	2.41%	141,372.00
5. Services and Other Operating Expenditures	5000-5999	1,447,257.90	0.89%	1,460,090.00	1.91%	1,487,922.67
6. Capital Outlay	6000-6999	0.00	0.00%	0.00	0.00%	0.00
7. Other Outgo (excluding Transfers of Indirect Costs)	7100-7299, 7400-7499	0.00	0.00%	0.00	0.00%	0.00
8. Other Outgo - Transfers of Indirect Costs	7300-7399	0.00	0.00%	0.00	0.00%	0.00
9. Other Financing Uses						
a. Transfers Out	7600-7629	483,090.00	0.00%	483,090.00	0.00%	483,090.00
b. Other Uses	7630-7699	0.00	0.00%	0.00	0.00%	0.00
10. Other Adjustments				0.00		0.00
11. Total (Sum lines B1 thru B10)		3,874,304.40	2.12%	3,956,564.22	2.80%	4,067,181.89
C. NET INCREASE (DECREASE) IN FUND BALANCE						
(Line A6 minus line B11)						
		19,295.89		(1,431.93)		(22,392.89)
D. FUND BALANCE						
1. Net Beginning Fund Balance (Form 011, line F1e)		457,535.35		476,831.24		475,399.31
2. Ending Fund Balance (Sum lines C and D1)		476,831.24		475,399.31		453,006.42
3. Components of Ending Fund Balance (Form 011)						
a. Nonspendable	9710-9719	6,000.00		6,000.00		6,000.00
b. Restricted	9740	110,352.00		53,245.67		0.00
c. Committed						
1. Stabilization Arrangements	9750	0.00		0.00		0.00
2. Other Commitments	9760	0.00		0.00		0.00
d. Assigned	9780	57,930.02		0.00		0.00
e. Unassigned/Unappropriated						
1. Reserve for Economic Uncertainties	9789	302,549.22		416,153.64		447,006.42
2. Unassigned/Unappropriated	9790	0.00		0.00		0.00
f. Total Components of Ending Fund Balance						
(Line D3f must agree with line D2)		476,831.24		475,399.31		453,006.42

Description	Object Codes	Projected Year Totals (Form 011) (A)	% Change (Cols. C-A/A) (B)	2016-17 Projection (C)	% Change (Cols. E-C/C) (D)	2017-18 Projection (E)
E. AVAILABLE RESERVES (Unrestricted except as noted)						
I. General Fund						
a. Stabilization Arrangements	9750	0.00		0.00		0.00
b. Reserve for Economic Uncertainties	9789	302,549.22		416,153.64		447,006.42
c. Unassigned/Unappropriated	9790	0.00		0.00		0.00
d. Negative Restricted Ending Balances (Negative resources 2000-9999)	979Z			0.00		0.00
2. Special Reserve Fund - Noncapital Outlay (Fund 17)						
a. Stabilization Arrangements	9750	0.00		0.00		0.00
b. Reserve for Economic Uncertainties	9789	944,397.42		944,397.42		944,397.42
c. Unassigned/Unappropriated	9790	0.00		0.00		0.00
3. Total Available Reserves - by Amount (Sum lines E1 thru E2c)		1,246,946.64		1,360,551.06		1,391,403.84
4. Total Available Reserves - by Percent (Line E3 divided by Line F3c)		32.19%		34.39%		34.21%
F. RECOMMENDED RESERVES						
1. Special Education Pass-through Exclusions						
For districts that serve as the administrative unit (AU) of a special education local plan area (SELPA):						
a. Do you choose to exclude from the reserve calculation the pass-through funds distributed to SELPA members?						
	No					
b. If you are the SELPA AU and are excluding special education pass-through funds:						
i. Enter the name(s) of the SELPA(s):						
<hr/>						
2. Special education pass-through funds						
(Column A: Fund 10, resources 3300-3499 and 6500-6540, objects 7211-7213 and 7221-7223; enter projections for subsequent years 1 and 2 in Columns C and E)						
		0.00		0.00		0.00
2. District ADA						
Used to determine the reserve standard percentage level on line F3d (Col. A: Form A1, Estimated P-2 ADA column, lines A6 and C4, enter projections)						
		171.22		171.22		171.22
3. Calculating the Reserves						
a. Expenditures and Other Financing Uses (Line B11)						
		3,874,304.40		3,956,564.22		4,067,181.89
b. Plus: Special Education Pass-through Funds (Line F1b2, if Line F1a is No)						
		0.00		0.00		0.00
c. Total Expenditures and Other Financing Uses (Line F3a plus line F3b)						
		3,874,304.40		3,956,564.22		4,067,181.89
d. Reserve Standard Percentage Level (Refer to Form 01CSI, Criterion 10 for calculation details)						
		5%		5%		5%
e. Reserve Standard - By Percent (Line F3c times F3d)						
		193,715.22		197,828.21		203,359.09
f. Reserve Standard - By Amount (Refer to Form 01CSI, Criterion 10 for calculation details)						
		65,000.00		65,000.00		65,000.00
g. Reserve Standard (Greater of Line F3e or F3f)						
		193,715.22		197,828.21		203,359.09
h. Available Reserves (Line E3) Meet Reserve Standard (Line F3g)						
		YES		YES		YES

Description	Object Codes	Projected Year Totals (Form 011) (A)	% Change (Cols. C-A/A) (B)	2016-17 Projection (C)	% Change (Cols. E-C/C) (D)	2017-18 Projection (E)
(Enter projections for subsequent years 1 and 2 in Columns C and E, current year - Column A - is extracted)						
A. REVENUES AND OTHER FINANCING SOURCES						
1. LCFF/Revenue Limit Sources	8010-8099	1,394,624.00	3.85%	1,448,297.00	3.72%	1,502,162.00
2. Federal Revenues	8100-8299	43,748.00	0.47%	43,953.62	2.13%	44,890.00
3. Other State Revenues	8300-8599	121,312.00	0.47%	121,882.00	2.13%	124,478.00
4. Other Local Revenues	8600-8799	826,476.00	0.00%	826,476.00	0.00%	826,476.00
5. Other Financing Sources						
a. Transfers In	8900-8929	0.00	0.00%		0.00%	
b. Other Sources	8930-8979	0.00	0.00%		0.00%	
c. Contributions	8980-8999	(70,784.92)	0.47%	(71,118.00)	2.13%	(72,633.00)
6. Total (Sum lines A1 thru A5c)		2,315,375.08	2.34%	2,369,490.62	2.36%	2,425,373.00
B. EXPENDITURES AND OTHER FINANCING USES						
1. Certificated Salaries						
a. Base Salaries				708,153.00		722,316.00
b. Step & Column Adjustment				14,163.00		14,446.00
c. Cost-of-Living Adjustment						
d. Other Adjustments						
e. Total Certificated Salaries (Sum lines B1a thru B1d)	1000-1999	708,153.00	2.00%	722,316.00	2.00%	736,762.00
2. Classified Salaries						
a. Base Salaries				407,371.22		413,482.22
b. Step & Column Adjustment				6,111.00		6,202.00
c. Cost-of-Living Adjustment						
d. Other Adjustments						
e. Total Classified Salaries (Sum lines B2a thru B2d)	2000-2999	407,371.22	1.50%	413,482.22	1.50%	419,684.22
3. Employee Benefits	3000-3999	344,482.31	11.50%	384,099.00	13.58%	436,247.00
4. Books and Supplies	4000-4999	96,089.67	2.22%	98,222.00	2.52%	100,697.00
5. Services and Other Operating Expenditures	5000-5999	210,915.82	2.22%	215,597.00	2.52%	221,030.00
6. Capital Outlay	6000-6999	0.00	0.00%		0.00%	
7. Other Outgo (excluding Transfers of Indirect Costs)	7100-7299, 7400-7499	0.00	0.00%		0.00%	
8. Other Outgo - Transfers of Indirect Costs	7300-7399	(2,990.00)	0.00%	(2,990.00)	0.00%	(2,990.00)
9. Other Financing Uses						
a. Transfers Out	7600-7629	483,090.00	0.00%	483,090.00	0.00%	483,090.00
b. Other Uses	7630-7699	0.00	0.00%		0.00%	
10. Other Adjustments (Explain in Section F below)						
11. Total (Sum lines B1 thru B10)		2,747,112.02	2.97%	2,313,816.22	3.49%	2,394,520.22
C. NET INCREASE (DECREASE) IN FUND BALANCE (Line A6 minus line B11)						
		68,263.06		55,674.40		30,852.78
D. FUND BALANCE						
1. Net Beginning Fund Balance (Form 011, line F1e)		298,216.18		366,479.24		422,153.64
2. Ending Fund Balance (Sum lines C and D1)		366,479.24		422,153.64		453,006.42
3. Components of Ending Fund Balance (Form 011)						
a. Nonspendable	9710-9719	6,000.00		6,000.00		6,000.00
b. Restricted	9740					
c. Committed						
1. Stabilization Arrangements	9750	0.00				
2. Other Commitments	9760	0.00				
d. Assigned	9780	57,930.02				
e. Unassigned/Unappropriated						
1. Reserve for Economic Uncertainties	9789	302,549.22		416,153.64		447,006.42
2. Unassigned/Unappropriated	9790	0.00		0.00		0.00
f. Total Components of Ending Fund Balance (Line D3f must agree with line D2)		366,479.24		422,153.64		453,006.42

Description	Object Codes	Projected Year Totals (Form 011) (A)	% Change (Cols. C-A/A) (B)	2016-17 Projection (C)	% Change (Cols. E-C/C) (D)	2017-18 Projection (E)
E. AVAILABLE RESERVES						
1. General Fund						
a. Stabilization Arrangements	9750	0.00		0.00		0.00
b. Reserve for Economic Uncertainties	9789	302,549.22		416,153.64		447,006.42
c. Unassigned/Unappropriated	9790	0.00		0.00		0.00
(Enter other reserve projections in Columns C and E for subsequent years 1 and 2; current year - Column A - is extracted)						
2. Special Reserve Fund - Noncapital Outlay (Fund 17)						
a. Stabilization Arrangements	9750	0.00				
b. Reserve for Economic Uncertainties	9789	944,397.42		944,397.42		944,397.42
c. Unassigned/Unappropriated	9790	0.00				
3. Total Available Reserves (Sum lines E1a thru E2c)		1,246,946.64		1,360,551.06		1,391,403.84

F. ASSUMPTIONS

Please provide below or on a separate attachment, the assumptions used to determine the projections for the first and second subsequent fiscal years. Further, please include an explanation for any significant expenditure adjustments projected in lines B1d, B2d, and B10. For additional information, please refer to the Budget Assumptions section of the SACS Financial Reporting Software User Guide.

DEHESA SCHOOL DISTRICT

To: Members of the Board
From: Nancy Hauer
Subject: Change of dates for the Board meetings.

Meeting Date: March 14, 2016

- Action
- First Reading
- Information
- Presentation
- Discussion
- Public Hearing
- Roll Call Vote Required

Background: As per Board Bylaw 9320 meetings are generally held on the 3rd Thursday of each month. Board Bylaw 9314 grants the right to suspend a policy for a specific purpose and for a limited time by majority vote.

Report: To accommodate work schedules, the Board voted at the February meeting to change the meetings to the second Tuesday of the month through December 2016, with the exception of the months that require specific weeks for budget reporting deadlines and the reorganizational meeting.

Financial Impact: None

Student Impact: None

Recommendation: It is recommended that the Governing Board approve the change in days from the third Thursday to second Tuesday for the 2016 Board meetings, with the noted exception of specific budget and reorganization meetings.

Agenda Item #:VII.C.2

DEHESA SCHOOL DISTRICT BOARD OF TRUSTEES

SCHEDULE OF REGULAR MEETINGS 2016

January 14, 2016
February 11, 2016
March 14, 2016*
April 12, 2016
May 10, 2016
June 28, 2016*
July 12, 2016
August 09, 2016
September 13, 2016*
October 11, 2016
November 8, 2016
December 13, 2016*

As per Board Bylaw #9320, meetings are generally held on the 3rd Thursday of each month at 7:00 p.m., in the Dehesa School MPR

Board bylaw 9314 grants the right to suspend a policy for a specific purpose and limited time by majority vote. To accommodate work schedules the board voted in February to change the date of the 2016 Board meetings to the second Tuesday of the month with the exception of the months that require specific weeks for budget reporting deadlines and reorganization.

***The March and September meetings are scheduled for the 2nd Tuesday and the June meeting for the 4th Tuesday to accommodate budget reporting deadlines.**

***The Annual Reorganizational Meeting must be held prior to December 15.**

Accommodations: In compliance with the American with Disabilities Act 1990, if you need special assistance to participate a meeting, please contact the office of the Superintendent at 619-444-2161. Notification of 48 hours prior to the meeting will enable the District to make reasonable arrangements to ensure accessibility to that meeting.

DEHESA SCHOOL DISTRICT

To: Members of the Board
From: Nancy Hauer
Subject: Resolution 2016-3.1
Classified Staff Reduction

Meeting Date: March 14, 2016

- Action
- First Reading
- Information
- Presentation
- Discussion
- Public Hearing
- Roll Call Vote Required

Background/Report:

Dehesa Extended Student Services is a 12 month program designed to provide before, after, summer student care and care during breaks during the school year.

Unfortunately, last summer we did not have enough students to pay for keeping the program open, but because it is a 12 month position we gave notice to comply with the 60 day rule per CSEA contract. This year not knowing whether or not enrollment will support the program we are issuing the layoff notices to comply with the 60 days.

Should we have enough students to remain open during the summer, we will rescind the layoff notices. If we don't have enough students to warrant being open, we will have to implement these layoffs. We will review enrollment for ESS for the 2015-16 school year and recall staff as numbers warrant.

Student Impact:

This will have a negative impact on the students and families who rely on ESS for childcare that is safe, convenient, and caring.

Financial Impact:

Closing ESS for the summer will prevent a negative loss to the District. In the 2013-2014 school year we were negative approximately \$2,000.00 by remaining open.

Recommendation:

It is with sincere regret that the declining enrollment in ESS makes it necessary to recommend that the Governing Board vote to reduce the Classified Student Care Staff effective June 17, 2016.

Agenda Item #: VII.C.3

DEHESA SCHOOL DISTRICT

**RESOLUTION REGARDING THE DISCONTINUANCE AND
REDUCTION OF CLASSIFIED EMPLOYEE SERVICES**

RESOLUTION NO. 2016-3.1

On a motion of member _____, seconded by member _____, the following Resolution is adopted:

WHEREAS, the Board of Trustees of the Dehesa School District has determined the best interests of this school district would be served by the elimination and reduction of services being provided in certain classified employee positions and based upon such elimination and reduction of services, a classified employee will be subject to layoff for lack of work and/or lack of funds within the meaning of Education Code section 45308;

WHEREAS, as a separate and independent cause for layoff, it is the determination of this Board of Trustees in analyzing and balancing educational priorities, to eliminate and reduce the services being performed by classified employees, so that a classified employee shall be subject to layoff for lack of work and/or lack of funds within the meaning of Education Code sections 45117 and 45308;

WHEREAS, the classified positions and eliminated as referred to herein is as follows:

- Student Care Assistant Two Positions (10 – 18.75 hours per week / 12 months per year)

- Student Care Coordinator One Position (25 hours per week / 12 months per year)

WHEREAS, the Board of Trustees desires to comply with the requirements of law within the balancing of priorities;

NOW, THEREFORE, IT IS RESOLVED AND ORDERED BY THE BOARD OF TRUSTEES AS FOLLOWS:

1. The above recitals are true and correct;

2. The services being performed in the classified position set forth hereinabove shall be eliminated or reduced, within the meaning of Education Code section 45308, and, as a result of said action, a classified employee shall be laid off;

3. As a separate and independent cause, as a result of the determination of the Board of Trustees in analyzing and balancing educational priorities, classified positions must be eliminated and reduced and a classified employee shall be subject to layoff for lack of work and/or lack of funds within the meaning of Education Code sections 45117(b) and 45308, and the affected classified employee serving within the classification listed hereinabove shall be laid off or reduced within the meaning of Education Code sections 45117 and 45308;

4. Said discontinuance and elimination and/or reduction shall become effective 60 days following the issuance of any required notice;

5. The Superintendent or her designee is directed to comply with applicable provisions in the Educational Employment Relations Act, if required;

6. The Superintendent or her designee is directed to give a notice of layoff to the affected classified employee (considering displacement or bumping rights), as required by the Education Code, including sections 45298 and 45308, where applicable;

IN WITNESS of the adoption of the foregoing Resolution, we, the members present and voting thereon, have hereunto set our hands this __ day of _____, 2014, County of San Diego, California.

**BOARD OF TRUSTEES OF THE
DEHESA SCHOOL DISTRICT**

Approval:

Dissenting:

Abstaining:

Absent:

I, Nancy Hauer, Superintendent for the Board of Trustees of the Dehesa School District of San Diego County, California, do hereby certify that the foregoing is a full, true, and correct copy of a Resolution duly adopted by said Board at a regular meeting thereof, on the date and place and by the vote above stated, which Resolution is on file and of record in the office of said Board.

DATE:

Nancy Hauer